



Fluid
Collection

APAVISA
slabs

Fluid

*Movimiento fluido. Fuerza imparable...
Estas son las características que SLABS recoge de la naturaleza para inspirarse en un nuevo concepto creativo. La Naturaleza se manifiesta en todo su esplendor a través del movimiento.
Energía y materia fluyen al unisono creando nuevas sensaciones.*

*Fluid movement. Unstoppable force ...
These are the characteristics that SLABS gathers from nature to be inspired in a new creative concept. Nature manifests itself in all its strength through movement.
Energy and matter flow together creating new sensations.*





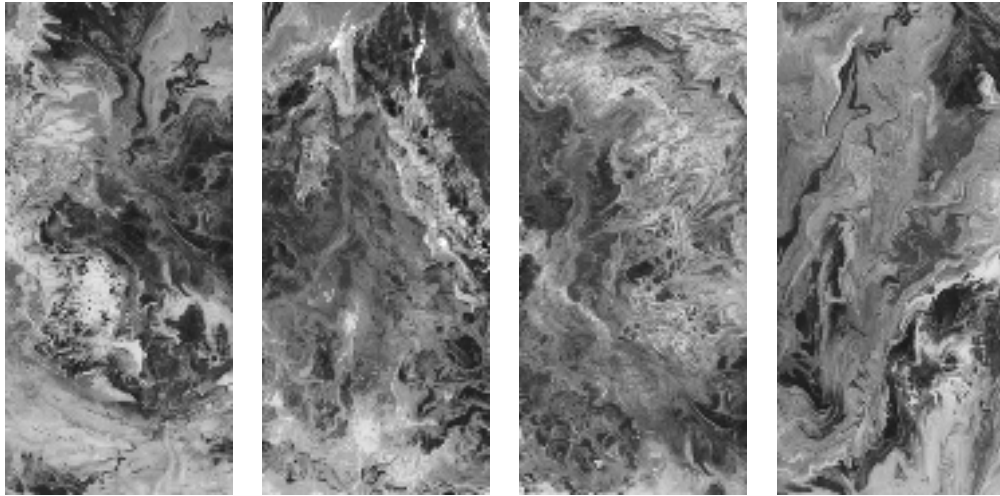


Fluid Black natural 90x90 + Fluid Multicolor polished 120x260



Fluid Black polished 120x260 & 120x120

Fluid black



Floor and Wall 6 mm

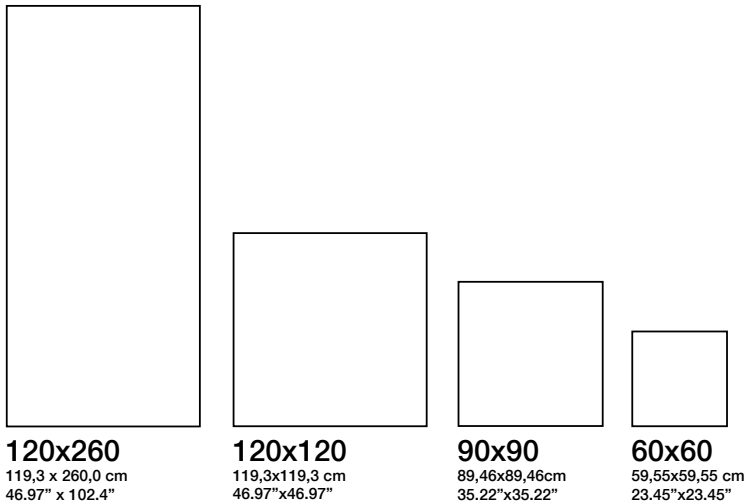
Fluid Black Pulido 120x260 G-3467
 Fluid Black Pulido 120x120 G-3467

Floor and Wall 7 mm

Fluid Black Pulido 90x90 G-1442
 Fluid Black Pulido 60x60 G-1298
 Fluid Black Natural 90x90 G-1352

Floor & Walls 6 mm

Floor & Walls 7 mm



Natural Finish	DIN R10	DCOF >0,42	PTV > 24 MODERATE SLIP POTENTIAL	CLASE 1
DIN 91130	ANSI A137.1 S-9.6.1	BS EN 13036-4	UNE-ENV 12633	

Fluid multicolor



Floor and Wall 6 mm

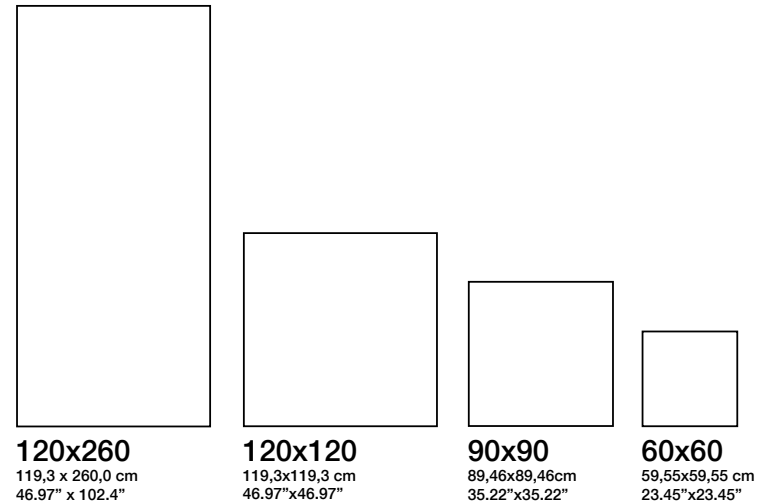
Fluid Multicolor Pulido 120x260 G-3467
 Fluid Multicolor Pulido 120x120 G-3467

Floor and Wall 7 mm

Fluid Multicolor Pulido 90x90 G-1442
 Fluid Multicolor Pulido 60x60 G-1298
 Fluid Multicolor Natural 90x90 G-1352

Floor & Walls 6 mm

Floor & Walls 7 mm



Natural Finish	DIN R10	DCOF >0,42	PTV > 24 MODERATE SLIP POTENTIAL	CLASE 1
DIN 91130	ANSI A137.1 S-9.6.1	BS EN 13036-4	UNE-ENV 12633	



APAVISA

Ctra. Castellón - San Juan de Moró, hm. 7,5 - 12130 SAN JUAN DE MORÓ (Castellón) Spain
Tel. +34 964 701 120 - Export Fax +34 964 701 067 - Fax Nacional 964 701 195 - info@apavisa.com

www.apavisa.com