



craftsman **WOOD**

**Dom**  
CERAMICHE



**Dom**  
C E R A M I C H E

white

mud

coal

honey

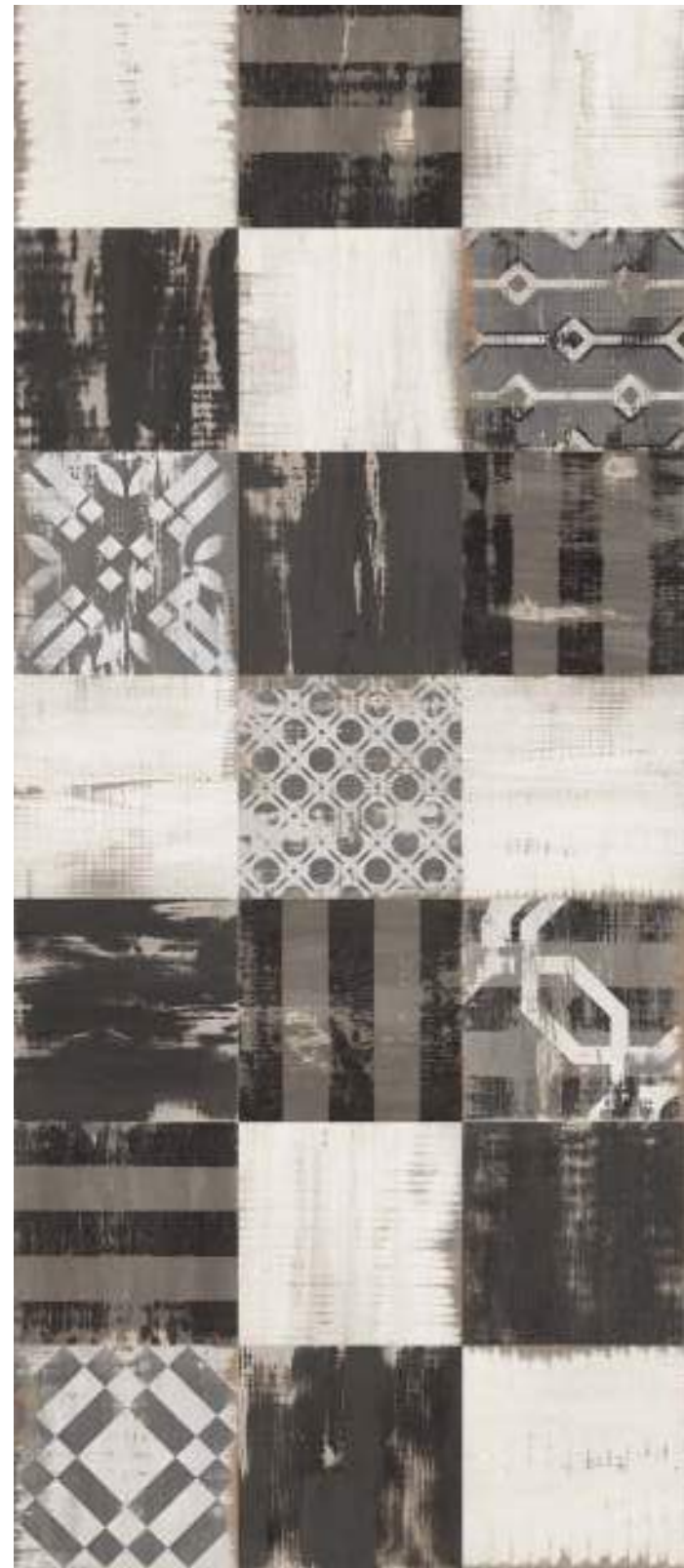
craftsman **WOOD**



1 size  
**1 formato**

20x120 18"x48"

**4 colori**  
4 colors





# Hamptons

\_LIGHT  
\_MEDIUM  
\_DARK

25x25  
10"x10"

**28 soggetti**  
**mix**

28 subjects  
mix



Mud 20x120 - 8"x48"  
Hamptons Medium 25x25 - 10"x10"



Mud 20x120 - 8"x48"





L'artigiano osserva il legno dell'albero e lo trasforma in materiale fruibile, utile per rifinire ed arredare la casa.

Craftsmen examine wood from trees and transform it into usable materials that can be employed to decorate and furnish homes.



White 20x120 - 12"x48"  
Hamptons Medium 25x25 - 10"x10"



craftsman **WOOD**

White 20x120 8"x48"





Assi tagliate e lavorate poi proposte in una linea di gres porcellanato che ne riproduce le caratteristiche estetiche naturali.

Planks are cut, processed and presented as part of a porcelain stoneware line that recreates the natural aesthetic features of wood.



Caol 20x120 - 8"x48"





Honey 20x120 8"x48"





Hamptons: pennellate, disegni semplici e freschi che si mescolano nelle varie nuances della collezione.

Hamptons: brushstrokes, simple and fresh designs that blend together in the collection's various nuances.





White 20x120 - 8"x48"  
Hamptons Light 25x25 - 10"x10"

## White



DCW1210 CRAFTSMAN WOOD WHITE 20x120 8"x48"

620/MQ



DCWEM10 CRAFTSMAN WOOD WHITE ESAGONA MIX  
(T. 12) 35x37,5 13,8"x14,8"

546/PZ

## Honey



DCW1220 CRAFTSMAN WOOD HONEY 20x120 8"x48"

620/MQ



DCWEM20 CRAFTSMAN WOOD HONEY ESAGONA MIX  
(T. 12) 35x37,5 13,8"x14,8"

546/PZ



DCWB10 CRAFTSMAN WOOD WHITE BATTISCOPIA 9x120 3<sup>3</sup>/<sub>5</sub>"x48"  
 DCWB20 CRAFTSMAN WOOD HONEY BATTISCOPIA 9x120 3<sup>3</sup>/<sub>5</sub>"x48"  
 DCWB90 CRAFTSMAN WOOD MUD BATTISCOPIA 9x120 3<sup>3</sup>/<sub>5</sub>"x48"  
 DCWB70 CRAFTSMAN WOOD COAL BATTISCOPIA 9x120 3<sup>3</sup>/<sub>5</sub>"x48"

527/PZ

## Mud



DCW1290 CRAFTSMAN WOOD MUD 20x120 8"x48"

620/MQ



DCWEM90 CRAFTSMAN WOOD MUD ESAGONA MIX  
(T. 12) 35x37,5 13,8"x14,8"

546/PZ

## Coal



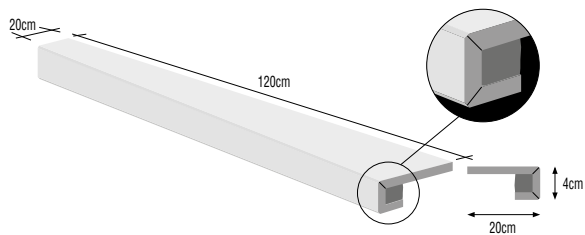
DCW1270 CRAFTSMAN WOOD COAL 20x120 8"x48"

620/MQ



DCWEM70 CRAFTSMAN WOOD COAL ESAGONA MIX  
(T. 12) 35x37,5 13,8"x14,8"

546/PZ



DCWS110 CRAFTSMAN WOOD WHITE SCALINO C. RETTA 20x120 8"x48"  
 DCWS120 CRAFTSMAN WOOD HONEY SCALINO C. RETTA 20x120 8"x48"  
 DCWS170 CRAFTSMAN WOOD COAL SCALINO C. RETTA 20x120 8"x48"  
 DCWS190 CRAFTSMAN WOOD MUD SCALINO C. RETTA 20x120 8"x48"

761/PZ



DCWHS01CRAFTSMAN WOOD HAMPTONS LIGHT 25x25 10"x10"

613/MQ

La composizione Hamptons è un mix 28 soggetti.

Nelle scatole contenenti 16 pezzi, i soggetti sono casuali quindi alcuni potrebbero ripetersi. Si suggerisce durante la posa di aprire diverse scatole in modo da ottenere la miscelazione ottimale.

Hamptons's composition is a mix of 28 different patterns.

Each box contains 16 pieces, the patterns are random so some of them can be repeated. Before the installation we suggest to open several boxes in order to obtain the optimal mix.



DCWHS02 CRAFTSMAN WOOD HAMPTONS MEDIUM 25x25 10"x10"

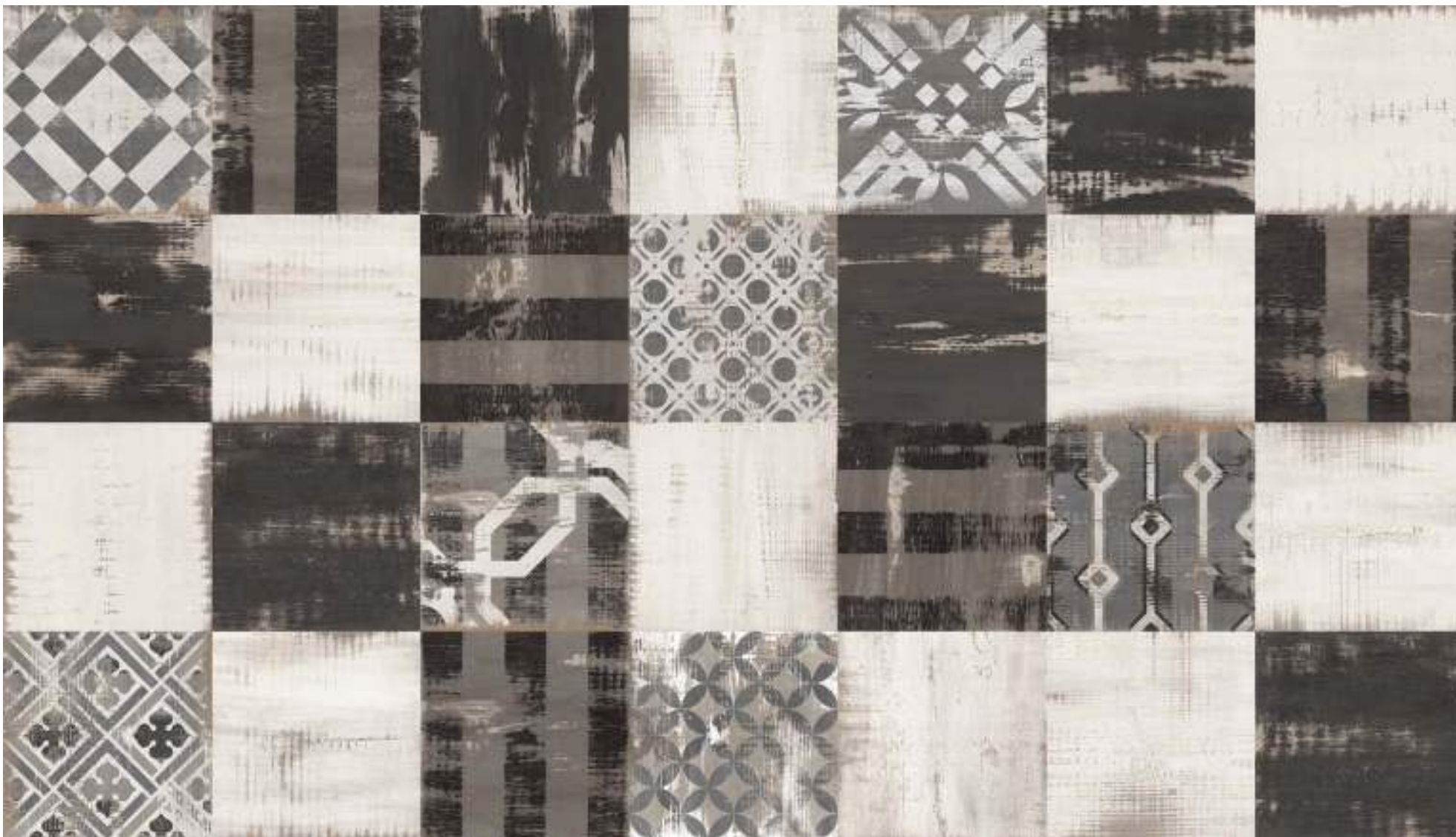
613/MQ

La composizione Hamptons è un mix 28 soggetti.

Nelle scatole contenenti 16 pezzi, i soggetti sono casuali quindi alcuni potrebbero ripetersi. Si suggerisce durante la posa di aprire diverse scatole in modo da ottenere la miscelazione ottimale.

Hamptons's composition is a mix of 28 different patterns.

Each box contains 16 pieces, the patterns are random so some of them can be repeated. Before the installation we suggest to open several boxes in order to obtain the optimal mix.



DCWHS03 CRAFTSMAN WOOD HAMPTONS DARK 25x25 10"x10"

613/MQ

La composizione Hamptons è un mix 28 soggetti.

Nelle scatole contenenti 16 pezzi, i soggetti sono casuali quindi alcuni potrebbero ripetersi. Si suggerisce durante la posa di aprire diverse scatole in modo da ottenere la miscelazione ottimale.

Hamptons's composition is a mix of 28 different patterns.

Each box contains 16 pieces, the patterns are random so some of them can be repeated. Before the installation we suggest to open several boxes in order to obtain the optimal mix.





DCW1220E CRAFTSMAN WOOD HONEY Extérieure 20x120 8"x48"

624/MQ

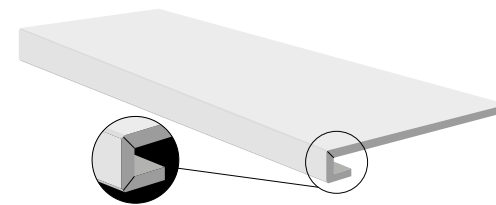


DCW1290E CRAFTSMAN WOOD MUD Extérieure 20x120 8"x48"

624/MQ

### SCALINO COSTA RETTA

Misure e prezzi a richiesta.  
Sizes and prices on request.  
Dimensions et prix sur demande.  
Formate und Preise auf Anfrage.  
Medidas y precios bajo petición.  
Размеры и цены по запросу



Pezzo speciale venduto al pezzo con consegna di 30 giorni lavorativi  
Special item sold by the piece with consignment after 30 work days  
Pièce spéciale vendue à la pièce, livraison en 30 jours ouvrables  
Stückweise verkaufte Formstück mit Lieferzeit von 30 Werktagen  
Piezas especiales vendidas por pieza con entrega en 30 días laborables  
Специальная единица, проданная поштучно,  
доставка в течение 30 рабочих дней

Imballi - Packing - Emballage - Verpackung			DIGITAL TECHNOLOGY		PORCELLANATO IMPASTO COLORATO		craftsman <b>WOOD</b>		
FORMATO size format format	Pz./SCATOLA pieces/box pieces/boîte stück/karton	Mq./SCATOLA sqm/box m²/boîte qm/karton	Kg./SCATOLA Kg/box Kg/boîte Kg/karton	Sc./PALLET boxes/pallet boîtes/palette kartons/palette	Mq./PALLET sqm/pallet m²/palette qm/palette	Kg./PALLET Kg/pallet Kg/palette Kg/palette	SPessore Thickness Epaisseur Stärke		
20x120 / 8"x48"	6	1,410	31,00	36	50,76	1.136	10mm		
20x120 / 8"x48" extérieure	6	1,410	31,00	36	50,76	1.136	10mm		
25x25 / 10"x10" hamptons	16	1,000	22,20	63	63,00	1.414	10mm		
9x120 / 3 <sup>3/5</sup> "x48" battiscopa	6	-	-	-	-	-	-		
20x120 / 8"x48" scalino costa retta	2	-	-	-	-	-	-		

Dati tecnici secondo norme: Technical data conform to: Caractéristiques techniques d'après normes: Technische Daten nach den Normen: EN 14411 B1, GL			craftsman <b>WOOD</b>	craftsman <b>WOOD</b> extérieure	craftsman <b>WOOD</b> hamptons	craftsman <b>WOOD</b>	craftsman <b>WOOD</b> extérieure	craftsman <b>WOOD</b> hamptons			
	Caratteristiche tecniche Technical data Caractéristiques techniques Technische Daten	Norme Norms Normes Norm	Valori Value Valeur Wert	Valori Value Valeur Wert	Valori Value Valeur Wert		Caratteristiche tecniche Technical data Caractéristiques techniques Technische Daten	Norme Norms Normes Norm	Valori Value Valeur Wert	Valori Value Valeur Wert	Valori Value Valeur Wert
	Resistenza all'abrasione Abrasion resistance Résistance à l'abrasion Abrasionswiderstandigkeit	ISO 10545-7	PEI IV	PEI IV	PEI IV		Scivolosità Slipperiness Degré de glissement Rutschhemmung	DIN 51130	R10	R11	R9
	Assorbimento d'acqua Water absorption Absorption d'eau Wasseraufnahme	ISO 10545-3	≤ 0,5%	≤ 0,5%	≤ 0,5%		Resistenza allo scivolamento Slip resistance Résistance au glissement Rutschhemmung	DIN 51097	B	C	B
	Resistenza alla flessione Breaking modulus Résistance à la flexion Biegefestigkeit	ISO 10545-4	40±55 N/ mm2	40±55 N/ mm2	40±55 N/ mm2		Scivolosità Slipperiness Degré de glissement Rutschhemmung	ANSI A137-1	> 0,42	> 0,42	> 0,42
	Resistenza al gelo Resistance to frost Résistance au gel Frostbeständigkeit	ISO 10545-12	Non gelive Frost proof Ingélif Frostsicher	Non gelive Frost proof Ingélif Frostsicher	Non gelive Frost proof Ingélif Frostsicher		Durezza Mohs Mohs hardness Dureté Mohs Haerte Mohs	EN101	6	6	6
	Resistenza all'attacco acido e basico Gloze resistance to acid and alkaline attack Résistance aux acides et aux bases Saeure-und laugenfestigkeit	ISO 10545-13	Resiste Resists Resiste Bestanding	Resiste Resists Resiste Bestanding	Resiste Resists Resiste Bestanding		Scivolamento B.C.R.A. Slipperiness B.C.R.A. Degré de glissement B.C.R.A. Rutschhemmung B.C.R.A.	TORTUS	WET > 0,42 DRY > 0,45	WET > 0,95 DRY > 0,80	WET > 0,42 DRY > 0,45
	Resistenza alle macchie Stain resistance Résistance aux taches Fleckenfestigkeit	ISO 10545-14	Totale Complete Totale Absolut	Totale Complete Totale Absolut	Totale Complete Totale Absolut						

I valori indicati nella tabella si riferiscono alle prove eseguite sul colore WHITE / HONEY EXTÉRIEURE / HAMPTONS LIGHT.

The values in the table refer to the tests performed on color WHITE / HONEY EXTÉRIEURE / HAMPTONS LIGHT.

Les valeurs indiquées dans le tableau se réfèrent aux essais exécutés sur le couleur WHITE / HONEY EXTÉRIEURE / HAMPTONS LIGHT.

Die in der Tabelle angegebenen Werte beziehen sich auf die Tests die auf dem Farbe WHITE / HONEY EXTÉRIEURE / HAMPTONS LIGHT ausgeführt wurden.

Los valores indicados en la tabla se refieren a las pruebas realizadas sobre el color WHITE / HONEY EXTÉRIEURE / HAMPTONS LIGHT.

Указанные в таблице значения относятся к испытаниям, проведенным на бежевом оттенке WHITE / HONEY EXTÉRIEURE / HAMPTONS LIGHT.





SEDE COMMERCIALE  
STRADA STATALE 569, N°167/A  
ITALY - 41014 SOLIGNANO (MO)  
TEL +39 059 75.77.911  
FAX +39 059 75.77.966  
[info@domceramiche.it](mailto:info@domceramiche.it)  
[www.domceramiche.it](http://www.domceramiche.it)

