

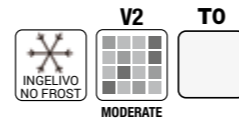
# MAGNUM



**IL CAVALLINO**  
CERAMICHE since 1968

made in italy

effetto cemento  
concrete-look  
effet ciment  
zementoptik



## Formati Sizes - Formats - Formate



R9   
tutti i colori /  
all colors

61x122,2 cm / 24"x48" R



R9   
tutti i colori /  
all colors

61x61 cm / 24"x24" R



R9   
tutti i colori /  
all colors

30,4x61 cm / 12"x24" R



R9   
tutti i colori /  
all colors

80x80 cm / 32"x32" R

## Colori Colours - Couleurs - Farben



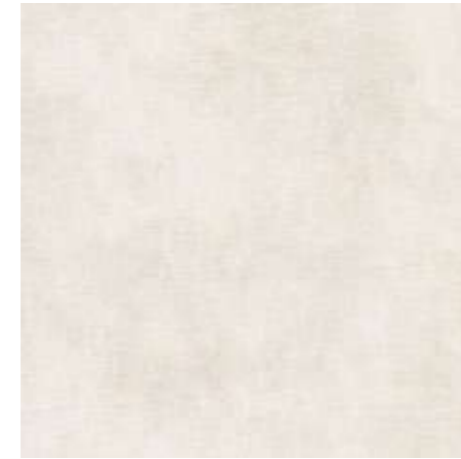
BEIGE



CREAM

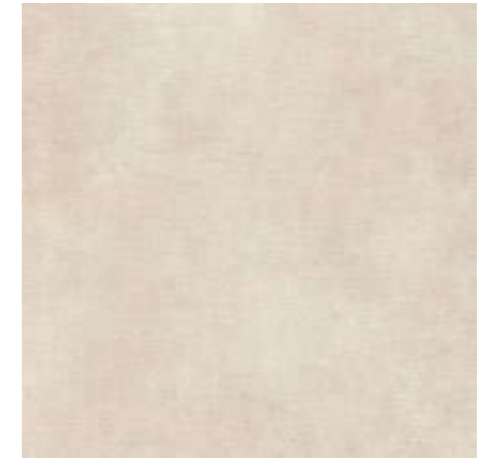


GREY



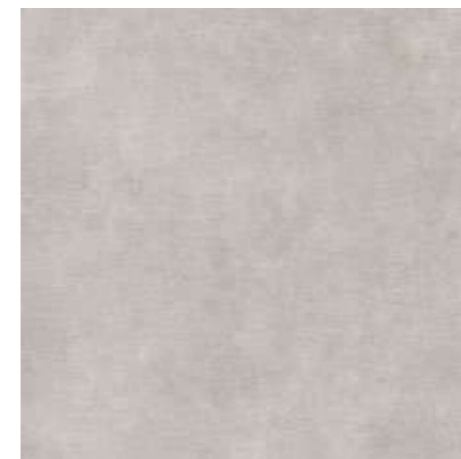
### beige

61x122,2 cm 24"x48"	R	A180B
80x80 cm 32"x32"	R	A201
61x61 cm 24"x24"	R	A192A
30,4x61 cm 12"x24"	R	B110



### cream

61x122,2 cm 24"x48"	R	A180B
80x80 cm 32"x32"	R	A201
61x61 cm 24"x24"	R	A192A
30,4x61 cm 12"x24"	R	B110

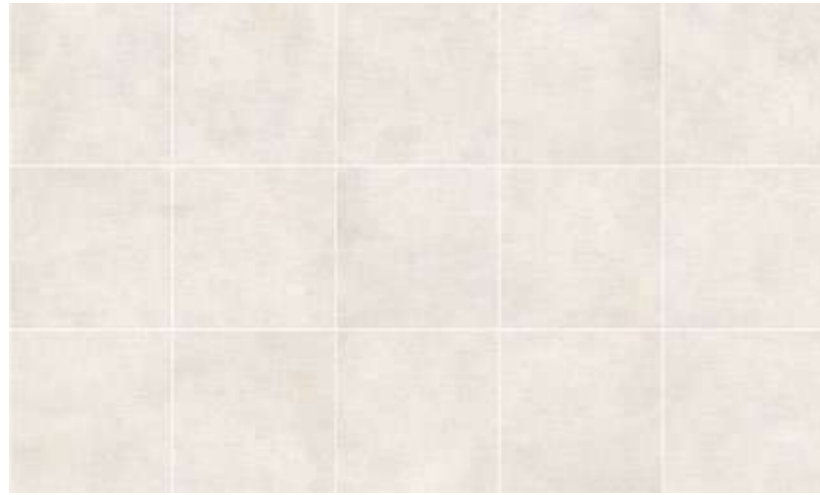


### grey

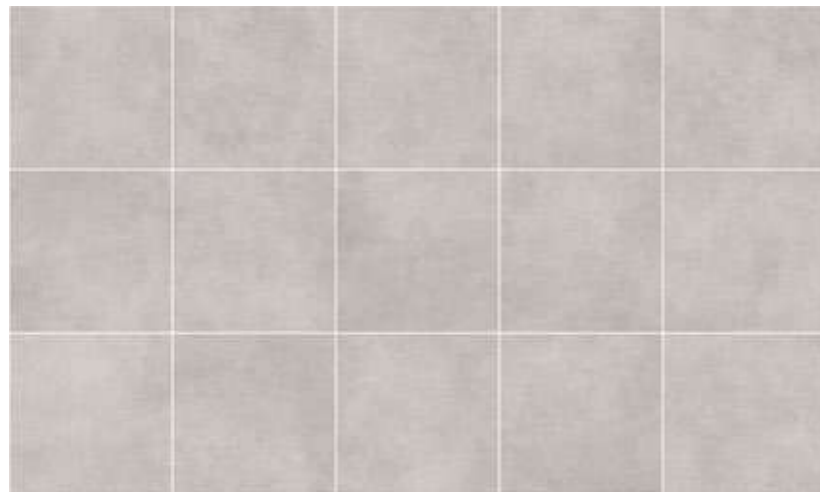
61x122,2 cm 24"x48"	R	A180B
80x80 cm 32"x32"	R	A201
61x61 cm 24"x24"	R	A192A
30,4x61 cm 12"x24"	R	B110

# MAGNUM

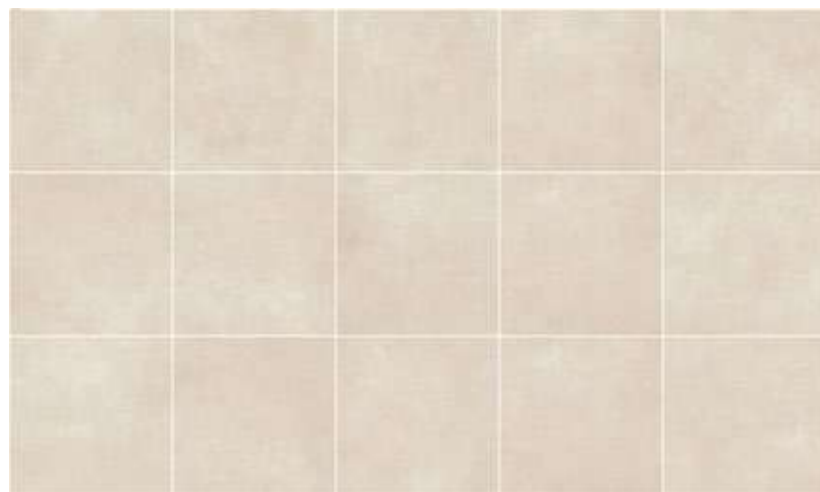
sviluppo grafico - design development - développement graphique - grafische entwicklung 61x61 cm /24"x24" R  
(15 grafiche diverse . 15 different design . 15 graphiques différents . 15 verschiedene Grafische)



beige



grey



cream

pezzi speciali - special pieces  
pièces spéciales - formteile  
battiscopa  
6,5x61 cm 2 1/2"x24" R

P07 12



beige



cream



grey





Grigio  
61x61 cm /24"x24" R

simbologia caratteristiche tecniche - grès porcellanato smaltato . symboles technical characteristics - grès porcellanato smaltato . symboles des caracteristiques techniques - grès cérame emailé . symbole technischen eigenschaften - glasiertes feinsteinzeug

 <b>CARATTERISTICHE TECNICHE</b> <b>TECHNICAL CHARACTERISTICS</b> <b>CARACTÉRISTIQUES TECHNIQUES</b> <b>TECHNISCHE MERKMALE</b>		<b>NORMA DI RIFERIMENTO</b> <b>REFERENCE STANDARD</b> <b>NORME DE REFERENCE</b> <b>PRÜFMETHODE</b>		<b>VALORE RICHIESTO</b> <b>REQUIRED VALUE</b> <b>VALEUR REQUISE</b> <b>SOLLWERT</b>		<b>VALORE MEDIO IL CAVALLINO</b> <b>AV. IL CAVALLINO VALUE</b> <b>VALEUR MOYENNE IL CAVALLINO</b> <b>MITTLERER IL CAVALLINO-WERT</b>	
	DIMENSIONI DIMENSIONS DIMENSIONS ABMESSUNGEN	ISO 10545-2		CONFORME COMPLIANT CONFORME KONFORM		CONFORME COMPLIANT CONFORME KONFORM	
	ASSORBIMENTO D'ACQUA WATER ABSORPTION ABSORPTION D'EAU WASSERAUFNAHME	ISO 10545-3		≤ 0,5 %		CONFORME COMPLIANT CONFORME KONFORM	
	RESISTENZA A FLESSIONE MODULUS OF RUPTURE RESISTANCE A LA FLEXION BIEGEFESTIGKEIT	ISO 10545-4		MODULUS OF RUPTURE R ≥ 35 N/MM <sup>2</sup> BREAKING STRENGTH S ≥ 1300 N		CONFORME COMPLIANT CONFORME KONFORM	
	RESISTENZA ALL'ABRASIONE ABRASION RESISTANCE RÉSISTANCE À L'ABRASION ABRIEBBESTÄNDIGKEIT	ISO 10545-7		PEI SOLO PER PIASTRELLE SMALTATE ONLY FOR GLAZED TILES			
	DILATAZIONE TERMICA LINEARE LINEAR THERMAL EXPANSION DILATATION THERMIQUE LINEAIRE LINEARE WÄRMEAUDEHNUNG	ISO 10545-8		= < 9x10 <sup>-5</sup> °C <sup>-1</sup>		CONFORME COMPLIANT CONFORME KONFORM	
	RESISTENZA AGLI SBALZI TERMICI THERMAL SHOCK RESISTANCE RESISTANCE AUX ECARTS DE TEMPERATURE ITEMPERATURWECHSELBESTÄNDIGKEIT	ISO 10545-9		RESISTENTE RESISTANT RESISTANT BESTÄNDIG		RESISTENTE RESISTANT RESISTANT BESTÄNDIG	
	RESISTENZA AL GELO FROST RESISTANCE RESISTANCE AU GEL FRÖSTBESTÄNDIGKEIT	ISO 10545-12		RESISTENTE RESISTANT RESISTANT BESTÄNDIG		RESISTENTE RESISTANT RESISTANT BESTÄNDIG	
	RESISTENZA AGLI ACIDI ED ALLE BASI ACID AND ALKALI RESISTANCE RESISTANCE AUX ACIDES ET AUX BASES SÄURE- UND LAUGENBESTÄNDIGKEIT	ISO 10545-13		CLASS GB MIN.		LOW CONCENTRATION GLA HIGH CONCENTRATION GHA	
	RESISTENZA ALL'ATTACCO CHIMICO CHEMICAL RESISTANCE RESISTANCE À L'ATTAQUE CHEMIQUE CHEMISCHE BESTÄNDIGKEIT	ISO 10545-13		CLASS GB MIN.		GA	
	RESISTENZA ALLE MACCHIE STAIN RESISTANCE RESISTANCE AU TACHES FLECKENBESTÄNDIGKEIT	ISO 10545-14		CLASS 3 MIN.		5	
	COEFFICIENTE DI ATTRITO (SCIVOLOSITÀ) FRICTION COEFFICIENT (SLIPPERINESS) COEFFICIENT DE FRICTION (GLISSEMENT) REIBUNGSKOEFFIZIENT (RUTSCHIGKEIT)	BCR - ITALIA DM DEL 14-06-89		ASTM - USA ASTM C1028		DIN - GERMANIA DIN 51130	
		DRY RUBBER	WET RUBBER	DRY LEATHER	DRY NEOLYTHE	WET NEOLYTHE	R9 ZH 1/571
		0,62	0,51	0,62	0,69	0,62	

THE PRODUCTS HAVING AN ABSORPTION < 0.5% ARE CLASSIFIED ACCORDING THE UNI CEN STANDARDS "FULLY VITRIFIED TILES" AND ACCORDING TO THE ASTM STANDARDS "IMPERVIOUS TILES"

Tabella pesi ed imballi . Sizes weight and packaging Mesures poids et emballages . Tabelle der Gewichte und Verpackungen

formati / sizes / tailles / formate		pz. x box	mq. x box	box x pal.	mq. x pal.	kg. x mq	kg. x box	kg. x pal.	
<b>RETTIFICATI / RECTIFIED (R)</b>									
80x80 cm 32"x32" R	8 mm	2	1,28	54	69,12	16,52	21,15	1155	84x122x95
61x122,2 cm 24"x48" R	8 mm	3	2,24	30	67,20	16,74	37,50	1142	94X122X75
61x61 cm 24"x24" R	8 mm	5	1,86	30	55,80	16,79	31,23	952	80X120X75
30,4x61 cm 12"x24" R	8 mm	8	1,48	40	59,20	16,79	24,85	1007	80X120X75
<b>pezzi speciali / special pieces / pièces spéciales / formteile</b>									
6,5x61 cm 2"x24" battiscopa rettificato	9 mm	12					8,5		

Le informazioni contenute nel presente catalogo sono il più possibile esatte, ma non sono da ritenersi vincolanti. Per esigenze di produzione l'Azienda si riserva il diritto di apportare eventuali modifiche che si rendessero necessarie. Peso, colori e misure sono soggetti alle inevitabili variazioni tipiche del processo di cottura della ceramica. Il colori e gli effetti riportati sul presente catalogo sono indicativi per i limiti consentiti dalla stampa; per questo non possono essere vincolanti e costituire base per eventuali contestazioni.

The information contained in this catalogue is as accurate as possible, but cannot be considered as legally binding. The Company reserves the right to make any modifications that become necessary due to production requirements. Weight, colours and dimensions are subject to the inevitable variations typical of the ceramic firing process. Colours and aesthetic effects shown on this catalogue should be considered indicative and approximate as a result of printing process limits. Possible variations may occur and can not be at the base of any claim.

Les informations reprises dans ce catalogue sont exactes, mais elles n'engagent aucunement notre Société du point de vue légal. Pour des exigences de production la Société se réserve le droit d'apporter toutes les dimensions sont assujettis aux variations typiques du processus de cuisson de la céramiques. Les couleurs et les effets présentés dans ce catalogue sont indicatifs dans la mesure permise par la presse, ce qui explique pourquoi ils ne peuvent pas être obligatoire et constituer la base d'un éventuel désaccord.

Die informationen des vorliegenden Katalogs sind so exakt wie möglich, sind jedoch nicht als gesetzlich verbindlich zu betrachten. Aus Fertigungsgründen behält die Firma sich das Recht vor, eventuell notwendige Änderungen vorzunehmen. Gewicht, Farben und Abmessungen unterliegen den unvermeidlichen Veränderungen, die für den Brennvorgang von Keramikprodukten typisch sind. Die in diesem Katalog gezeigten Farben und Effekte sind Richtwerte, soweit durch die Presse, die ist, warum sie nicht bindend und stellen die Grundlage für eine Meinungsverschiedenheit gestattet.

Credit:

Marketing:  
Il Cavallino

Progetto Grafico:

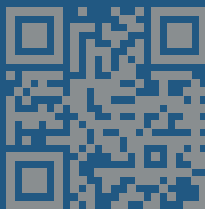
EUREKA





**IL CAVALLINO**  
CERAMICHE since 1968

**IL CAVALLINO Ceramica Artistica S.p.a.**  
Via 2 Giugno, 3/5  
41040 Fiorano Modenese -  
frazione Spezzano (MO) Italy  
tel. +39 0536 84 39 64  
fax Commerciale +39 0536 84 56 50  
fax Amministrazione +39 0536 92 15 86  
[www.ceramicacavallino.it](http://www.ceramicacavallino.it)  
[ilcavallino@ilcavallinocer.it](mailto:ilcavallino@ilcavallinocer.it)



Ceramics of Italy