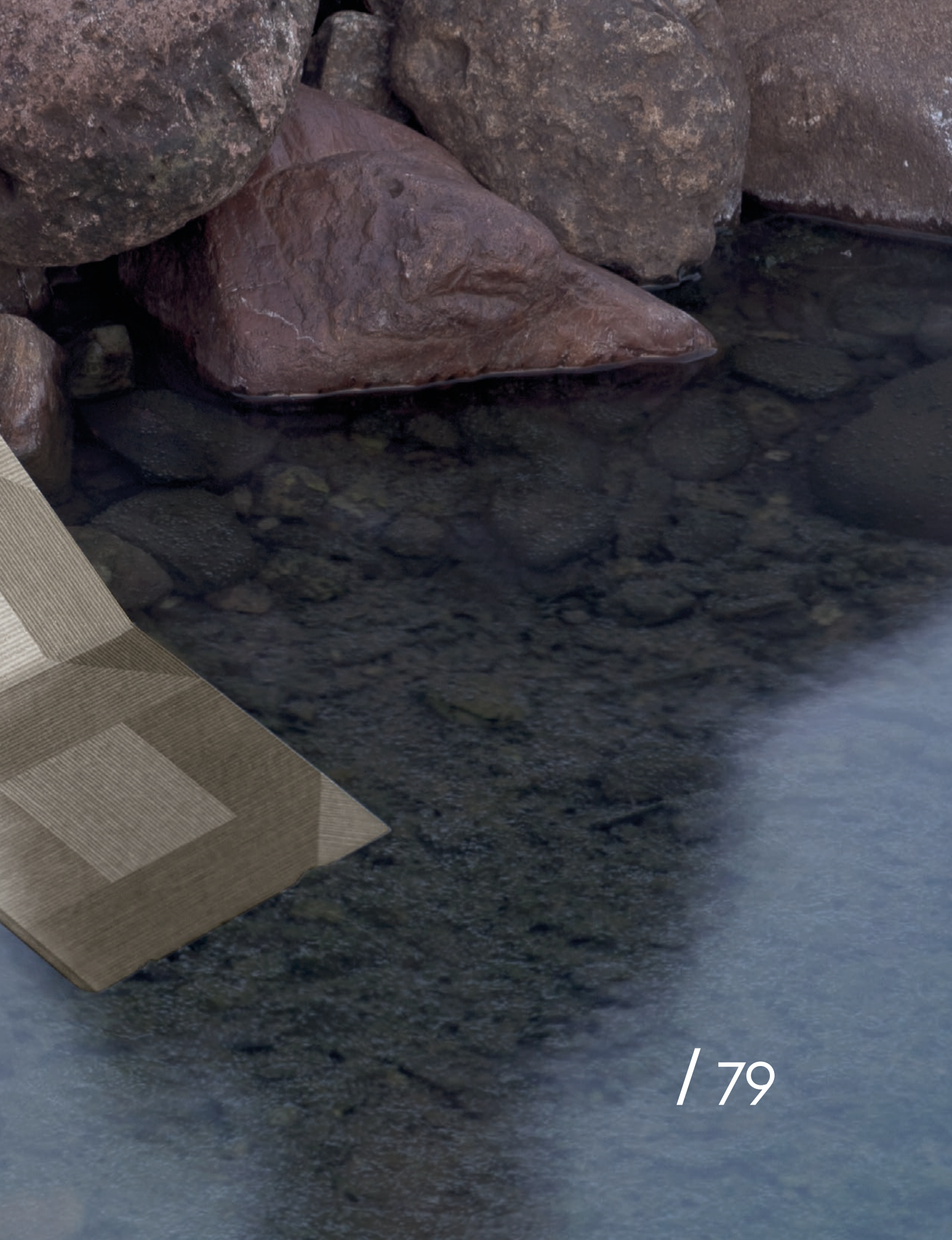




Heth

Collections



La forma geometrica dell'ottagono diventa la fonte d'ispirazione di HETH. Un sistema di piastrelle composto da due moduli doppi declinati in varianti tonali e cromatiche. Grazie alle corrispondenze geometriche, le combinazioni facili e svariate aprono al progettista e al cliente ultimo diverse soluzioni di posa guidate o di libera interpretazione. Tra forma, simbolismo e storia, HETH è una dinamica creativa che nasce da un profondo studio sulle permutazioni dell'ottagono e le sue infinite combinazioni. Largamente presente nell'architettura mediterranea, è la forma geometrica che rappresenta il collegamento tra il quadrato e il cerchio, la Materia e il Cosmo. Per questa ragione, è da sempre fonte d'ispirazione mistica in tradizioni e culture diverse. HETH è un sistema di piastrelle di formato ridotto, un approccio metodologico e numerico è alla base delle composizioni, con una palette calda basata su un rosso terroso e materico, beige e cipria, e una fredda sulle tonalità del blu e del verde.

The geometric shape of the octagon serves as a source of inspiration for HETH. A tiles system of two double modules presented in different tonal and colour combinations. Through its geometric patterns, HETH offers easy and diverse guided and personalised layouts that aim to amplify the design experience of interior professionals, architects and final clients. History blends with rigour and symbolism, shaping a creative and dynamic line that remains an in-depth study of the octagon's permutations and their endless possibilities. Widely present in Mediterranean architecture, the shape represents the connection between the square and the circle, Matter and Cosmo. For this reason, the octagon has always been a mystic inspiration among different cultures and traditions. A collection of reduced format tiles, HETH's originality lies in a methodological and numeric approach to composition, enhanced by a contrasted colour palette featuring warm, material reds, beiges and powders paired with cool greys, blues and greens.

Discover **Heth**



A modern dining table and two chairs are positioned in a room with a wall featuring a complex geometric pattern. The pattern consists of interlocking squares and rectangles in shades of brown, tan, and grey, creating a 3D optical illusion. The wall is framed by two large, white, arched openings. The table is a light-colored wood with a thick top and a central pedestal. The chairs have a brown fabric upholstery and a gold-colored metal frame. The floor is a light grey tile.

*Contemporary,
Geometric,
Customizable*

Heth Mater, Heth Lithos 16,2 x 32,5



/ 84

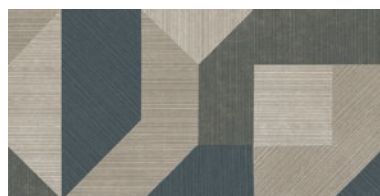
Heth Eter, Heth Cosmo 16,2 x 32,5

Heth |

Heth Cosmo 16,2x32,5
16HT50



Heth Astra 16,2x32,5
16HT20



Heth Mater 16,2x32,5
16HT70



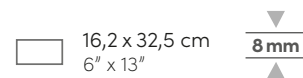
Heth Lithos 16,2x32,5
16HT07



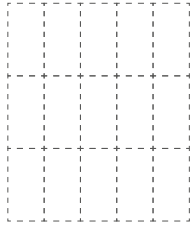
Heth Eter 16,2x32,5
16HT30



Heth Locus 16,2x32,5
16HT02



Heth /



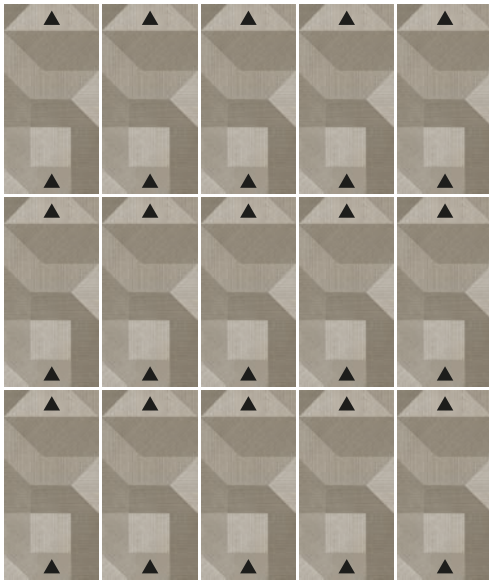
Locus
Lithos
Astra



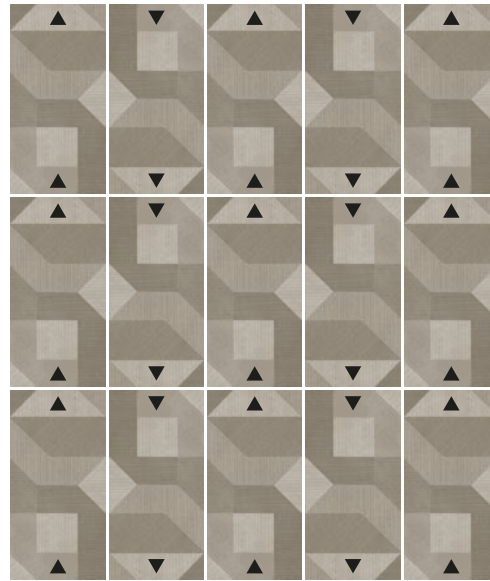
Eter
Mater
Cosmo

A1

Locus
Lithos
Astra

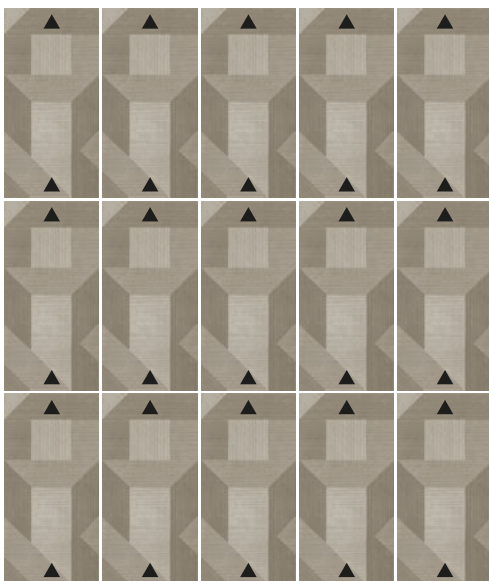


A2

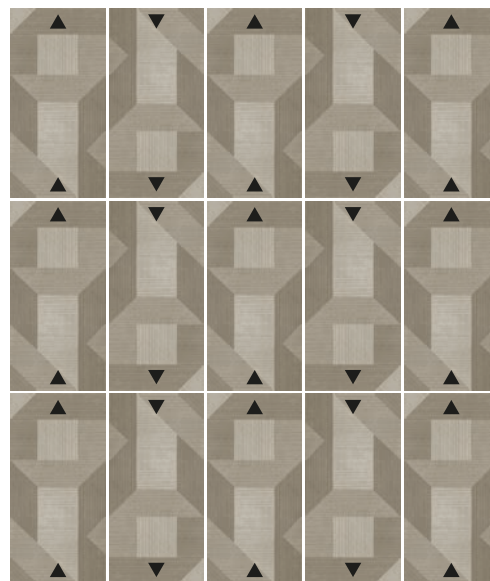


A3

Eter
Mater
Cosmo

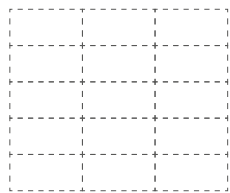


A4

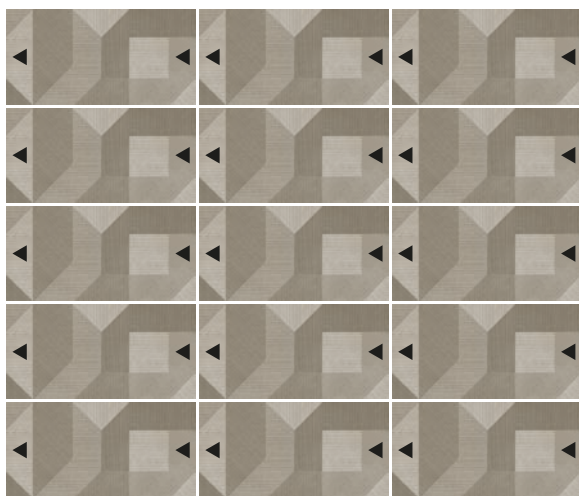


Laying Patterns

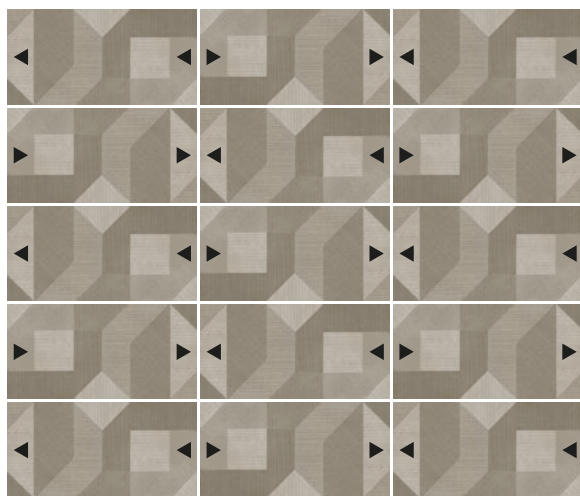
/ 87



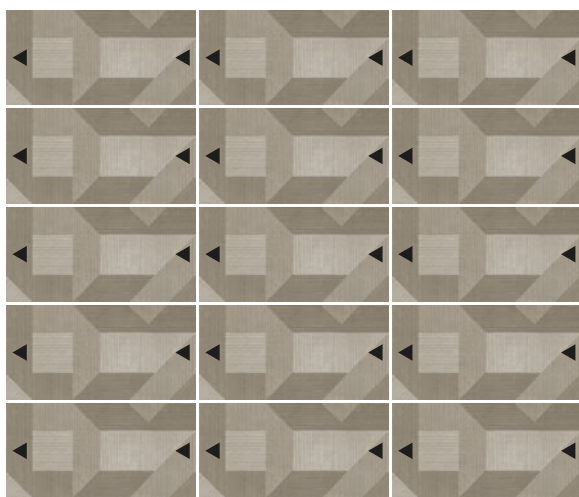
B1



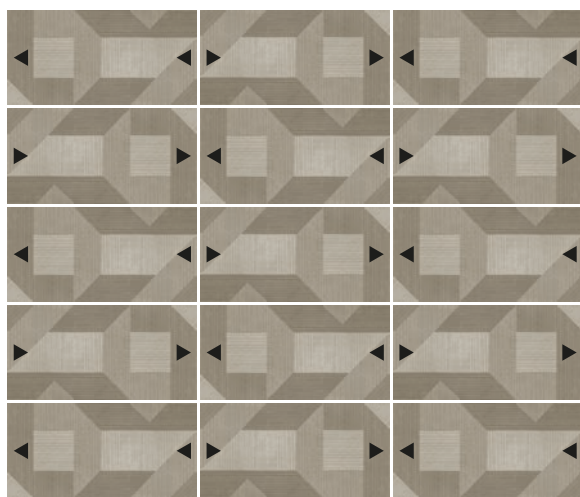
B2



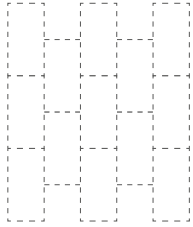
B3



B4



Heth /



Locus
Lithos
Astra



Eter
Mater
Cosmo

C1

Locus
Lithos
Astra

C2

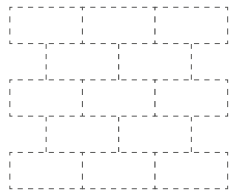
C3

Eter
Mater
Cosmo

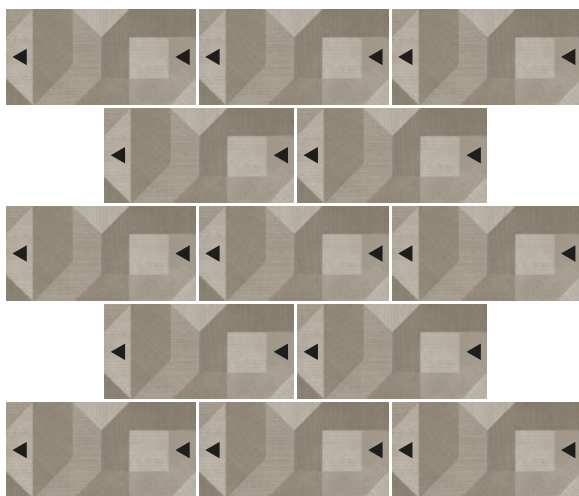
C4

Laying Patterns

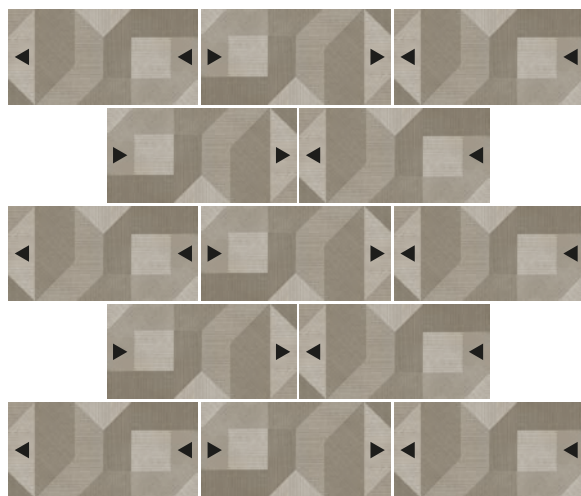
/ 89



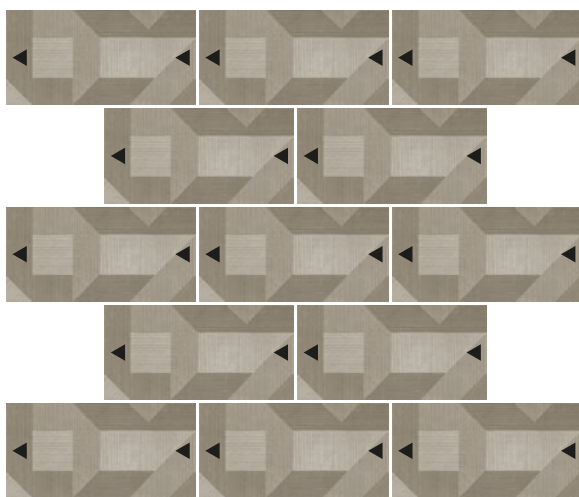
D1



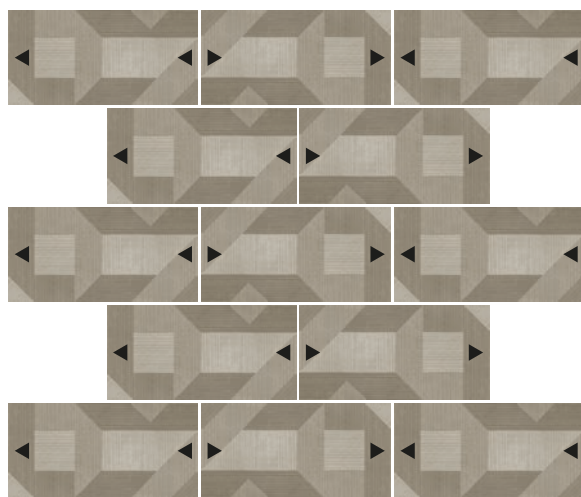
D2



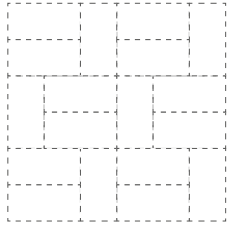
D3



D4



Heth /



Locus
Lithos
Astra



Eter
Mater
Cosmo

E1

Locus
Lithos
Astra

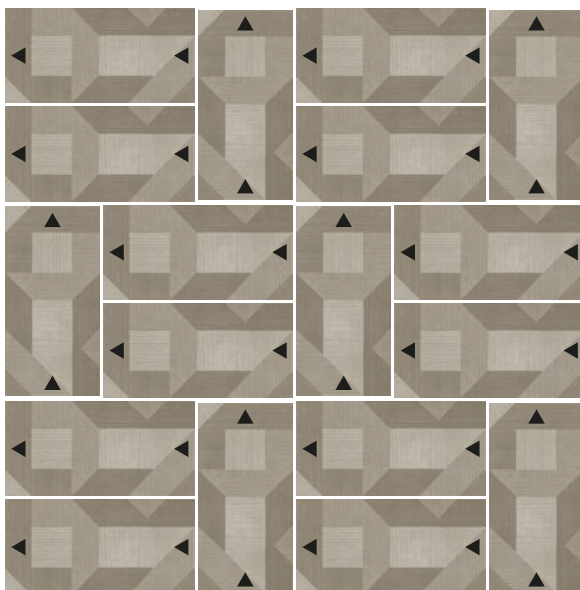


E2

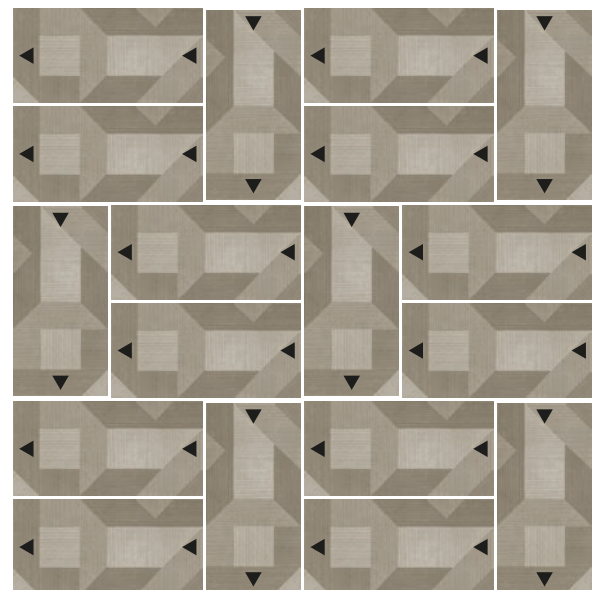


E3

Eter
Mater
Cosmo

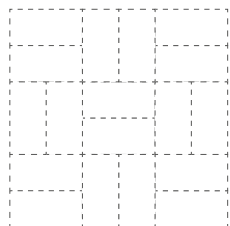


E4

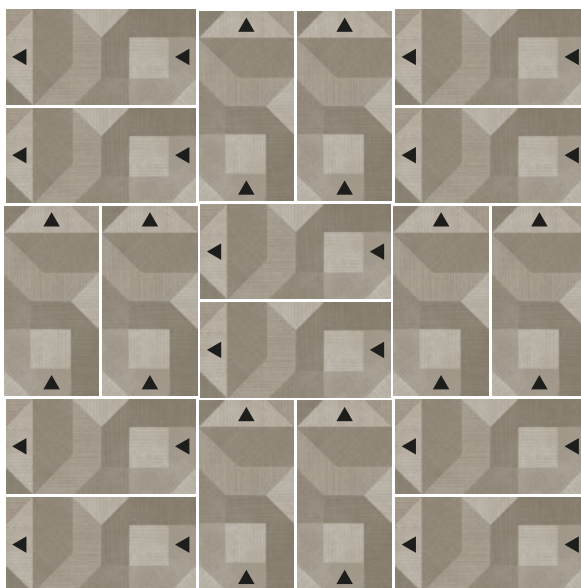


Laying Patterns

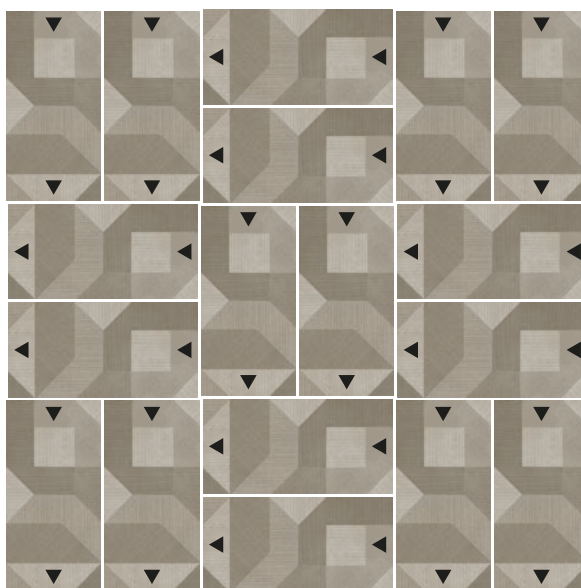
/ 91



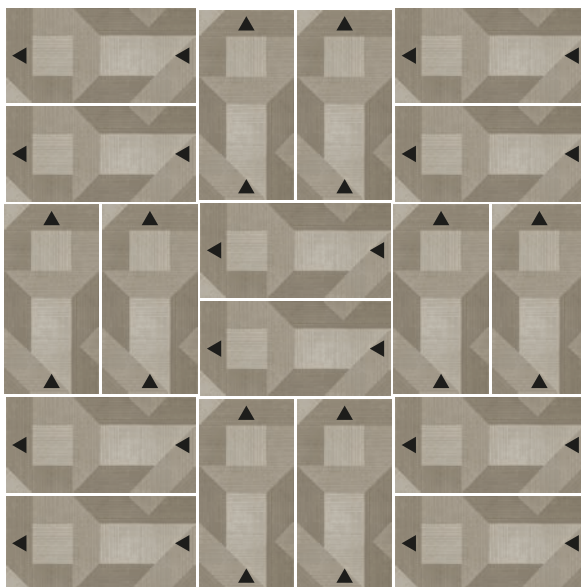
F1



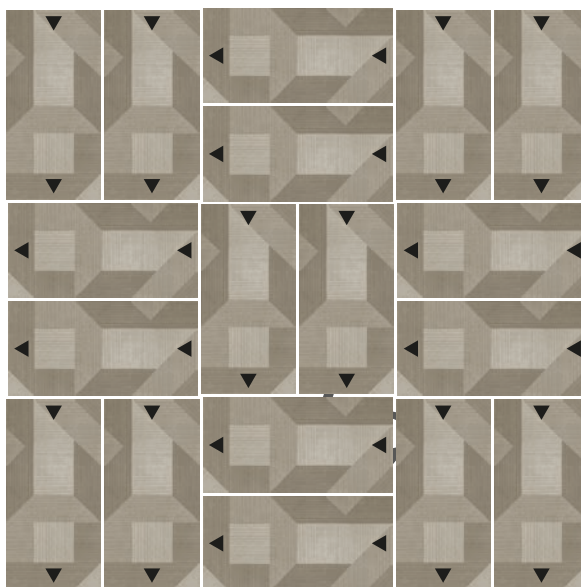
F1



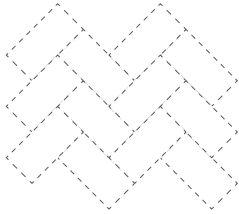
F3



F4



Heth /



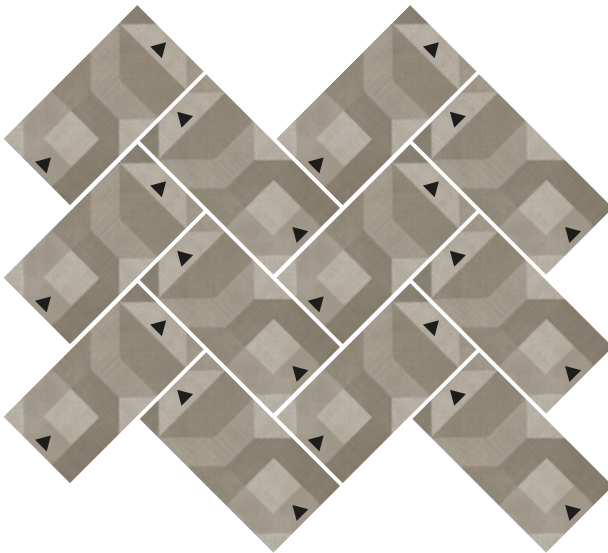
Locus
Lithos
Astra



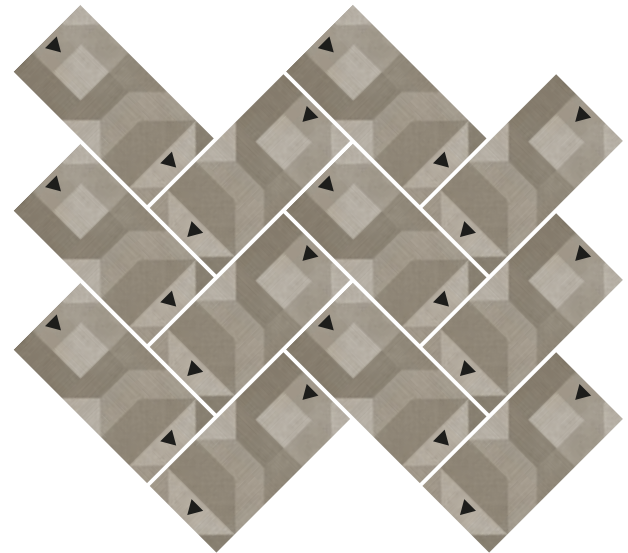
Eter
Mater
Cosmo

G1

Locus
Lithos
Astra

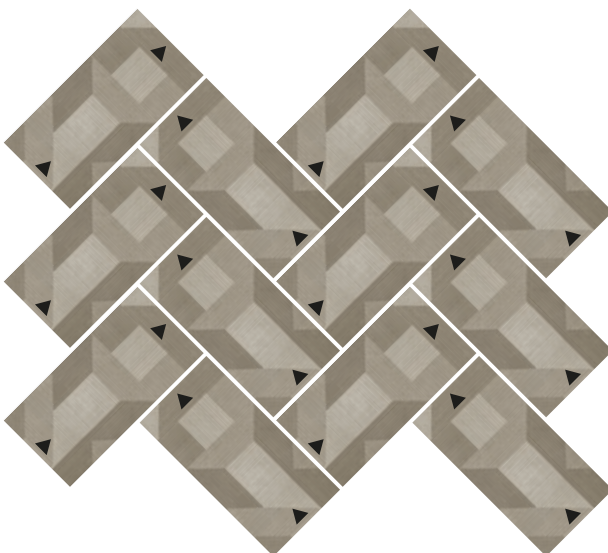


G2

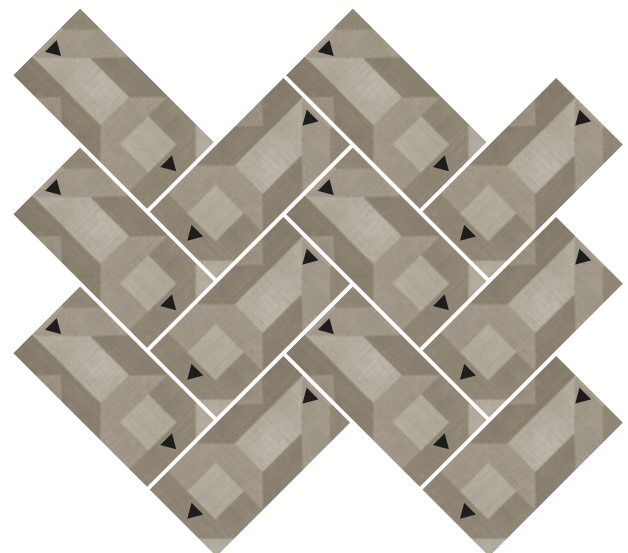


G3

Eter
Mater
Cosmo



G4



Heth Mater 16,2 x 32,5

