

LUX 75X25

MCM
CERAMICHE



WHITE

LUX ONDA WHITE 25x75 / LUX WHITE 60x60 RETTIFICATO



WHITE
GOLD

01

LUX GOLD 25x75 / MOSAICO 3D GOLD 25x75 / WHITE 25x75 / LUX GOLD 60x60 RETTIFICATO

02 GREY
WHITE



03

LUX GREY 25X75 / MOSAICO 3D GREY 25X75 / WHITE 25X75 / LUX GREY 60X60 RETTIFICATO



04 **GREY
WHITE**

LUX GREY 25x75 / ONDA GREY 25x75

LUX GREY 25x75 / ONDA GREY 25x75 / WHITE 25x75 / LUX WHITE 60x60 RETTIFICATO



05



06 **TAUPE**

LUX TAUPE 25x75 / MOSAICO GLOSSY TAUPE 25X25

LUX TAUPE 25X75 / MOSAICO GLOSSY TAUPE 25x25 / WHITE 25x75 / LUX TAUPE 60x60 RETTIFICATO



07

08 **TAUPE
GOLD**



09



10 GOLD

LUX ONDA GOLD 25x75



11

LUX ONDA GOLD 25x75 / LUX GOLD 60x60 RETTIFICATO

LUX 25X75

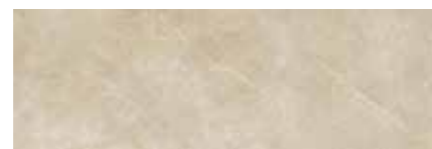
Rivestimento lucido in pasta bianca White-body glossy wall tile

25x75 10"x30" ±9 mm

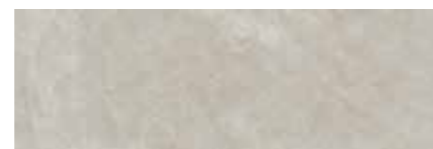
valore nominale nominal value



25x75 Lux Taupe



25x75 Lux Gold



25x75 Lux Grey



25x75 Lux Mosaico 3D Taupe



25x75 Lux Mosaico 3D Gold



25x75 Lux Mosaico 3D Grey



12



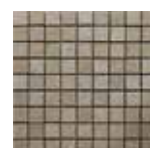
3,8x75 Lux Listello Glossy Taupe



3,8x75 Lux Listello Glossy Gold



3,8x75 Lux Listello Glossy Grey



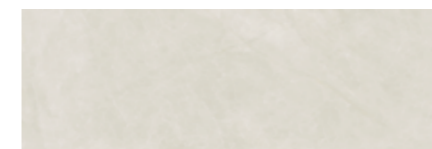
25x25 Lux Taupe
Mosaico Glossy 2,5x2,5



25x25 Lux Gold
Mosaico Glossy 2,5x2,5



25x25 Lux Grey
Mosaico Glossy 2,5x2,5



25x75 Lux White



25x75 Lux Onda White



25x75 Lux Onda Grey



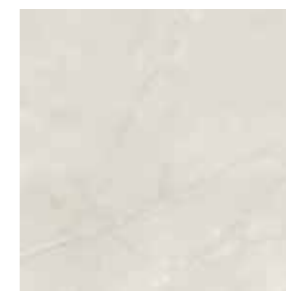
25x75 Lux Onda Gold



pavimento coordinato co-ordinated floor tile
gres porcellanato levigato porcelain stoneware polished
rettificato rectified

60x60 24"x24" ±10 mm

valore nominale nominal value



60x60 Lux White Levigato Rettificato



60x60 Lux Gold Levigato Rettificato



60x60 Lux Grey Levigato Rettificato



60x60 Lux Taupe Levigato Rettificato



13

LUX	mq/scatola	kg/scatola	colli/pallet	mq/pallet	kg/pallet
25x75	1,31	21	48	62,88	1008

Contributo spese imballo euro 5,50/pal. netto

LUX	mq/scatola	kg/scatola	colli/pallet	mq/pallet	kg/pallet
60x60 Rettificato	1,08	24,00	32	34,56	768,00

Contributo spese imballo euro 5,50/pal. netto



MGM Ceramiche

Via Cimabue, 1/A - 42014 Castellarano (RE)

Tel. +39 0536 078551 - Fax +39 0536 077131

info@mgmceramiche.it

www.mgmceramiche.it

MADE IN ITALY