



Danubio

White body wall tiles

Danubio-H/R Vosgos-H/R
Aluminio/90 Leitha-H/R

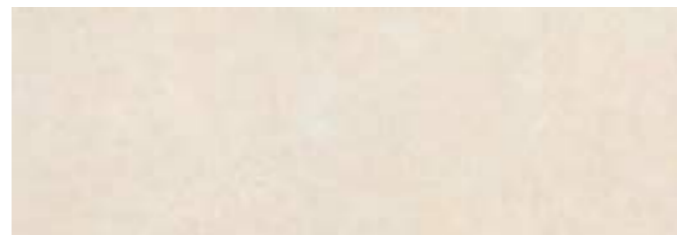
DANUBIO G



VOSGOS G



DANUBIO H



VOSGOS H



LEITHA G



LEITHA H



26200 ALUMINIO/90/MAT_90 * 0,5 cm | 35 * 0,2" _ P39



07021 ACERO/90_1,5 * 90 cm | 0,6 * 36" _ P30

* No se aconseja su uso en zonas con presencia de vapor.
Not suitable for environments where water vapour is present.

CARACTERÍSTICAS TÉCNICAS TECHNICAL CHARACTERISTICS		
joint 	wall tiles 	matt
diferent shades 	shade variation 	various graphics

EMBALAJE PACKING								(Los pesos aquí reflejados pueden sufrir ligeras variaciones en función del lote de producción. Weights shown here may slightly vary depending on the production lot.)	
Formato Sizes	Cajas Boxes			Pallet				Cont./20' 21500 kg.	Cont./20' 24000 kg.
cm	Piezas	m2/ sq.m	kg	Cajas	m2/ sq.m	kg	Tamaño cm aprox.	m2/ sq.m	m2/ sq.m
32 * 90 * 1,05	4	1,15	20,90	56	64,40	1194	120 * 80 * 105	1159,63	1294,47
33 * 91 * 1,05	4	1,20	21,80	51	61,20	1136	120 * 80 * 106	1158,27	1292,96
inch	Units	ft2	lb	Boxes	ft2	lb	Sizes inch approx.	ft2	ft2
12 5/8 * 35 7/16 * 7/16	4	12,38	46,08	56	693,20	2632,77	47 1/4 * 31 1/2 * 41 5/16	12482,27	13933,70
13 * 35 13/16 * 7/16	4	12,92	48,07	51	658,76	2504,88	47 1/4 * 31 1/2 * 41 3/4	12467,67	13917,40

DANUBIO



12 patterns

32 * 90 * 1,05 cm | 13 * 36"

33 * 91 * 1,05 cm | 13 * 36"

RECTIFIED	NATURAL PRICE CODE BN29
G	14430
H	14431



NO RECTIFIED	NATURAL PRICE CODE BN21
G	14364
H	14365

VOSGOS



12 patterns

32 * 90 * 1,05 cm | 13 * 36"

33 * 91 * 1,05 cm | 13 * 36"

RECTIFIED	NATURAL PRICE CODE BN36
G	14432
H	14433



NO RECTIFIED	NATURAL PRICE CODE BN25
G	14406
H	14405

MATCHING FLOOR COLLECTIONS
DANUBIO_PORCELAIN | Pag. 72

LEITHA



9 patterns

44,7 * 44,7 * 0,8 cm | 18 * 18"

45,6 * 45,6 * 0,8 cm | 18 * 18"

RECTIFIED	NATURAL PRICE CODE BN58
G	16422
H	16423



NO RECTIFIED	NATURAL PRICE CODE BN59
G	16383
H	16384



07605 ALUMINIO/90_0,5 * 90 cm | 0,2 * 36" _ P39



26201 L. GOLDEN/MAT/90_90 * 0,5 cm | 35 * 0,2" _ P39



* 17974 L. ANDROS/R_0,5 * 90 cm | 0,2 * 36" _ P53



Danubio

Porcelain tiles

Leitha-H

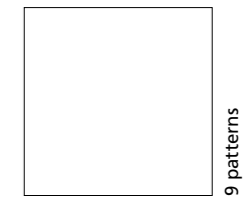
LEITHA G



LEITHA H



LEITHA



44,7 * 44,7 * 0,8 cm | 18 * 18"

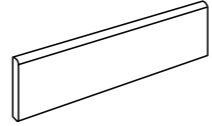
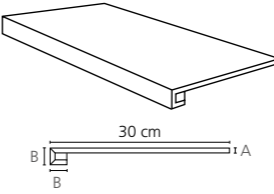
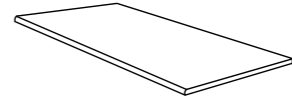
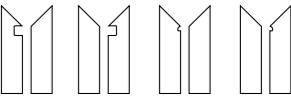
	RECTIFIED	NATURAL PREC. CODE BN58
G		16422
H		16423

45,6 * 45,6 * 0,8 cm | 18 * 18"



	NO RECTIFIED	NATURAL PREC. CODE BN59
G		16383
H		16384

PIEZA COMPLEMENTARIA | COMPLEMENTARY PIECE

Rodapie - Skirting	Peldaño técnico - Technical stair - thread	Peldaño romo - Rounded stair - thread	*S.K.I. *S.K.D. *Z.R.I. *Z.R.D.
 R.	 P.	 R.P.	
8 * 44,7 cm 3 * 18" P29 8 * 45,6 cm 3 * 18" P27	30 * 45,6 cm 12 * 18" P61 A= 0,8 cm B= 2,4 cm	30 * 45,6 cm 12 * 18" P55	8 * 30 cm 3 * 12 P53

CARACTERÍSTICAS TÉCNICAS | TECHNICAL CHARACTERISTICS

 joint	 frost proof	 versatile	 matt	 different shades	 shade variation	 various graphics
---	---	---	--	--	---	--

CARACTERÍSTICAS TÉCNICAS ANTIDESLIZAMIENTO | ANTI-SLIP CHARACTERISTICS

Ensayo Essay	Características Features	Resultado Result
DIN 51130	Ángulo crítico (Pies calzados) Critical angle (footwear)	R9
UNE-ENV 12633	Antideslizamiento (Test del péndulo) Slip resistance (Pendulum test)	Class 1
ISO 10545-7	Resistencia a la Abrasión Superficial Resistance to Surface Abrasion	PEI 4

EMBALAJE | PACKING

(Los pesos aquí reflejados pueden sufrir ligeras variaciones en función del lote de producción. Weights shown here may slightly vary depending on the production lot.)

Formato Sizes	Cajas Boxes			Pallet				Cont./20'	Cont./20'
	Piezas	m ² / sq.m	kg	Cajas	m ² / sq.m	kg	Tamaño cm aprox.	21500 kg.	24000 kg.
cm								m ² / sq.m	m ² / sq.m
44,7 * 44,7 * 0,8	5	1	18,20	66	66	1225	120 * 80 * 104	1158,37	1293,06
45,6 * 45,6 * 0,8	5	1,04	18,80	66	68,64	1265	120 * 80 * 105	1166,61	1302,26
inch	Units	ft ²	lb	Boxes	ft ²	lb	Sizes inch approx.	ft ²	ft ²
17 5/8 * 17 5/8 * 5/16	5	10,76	40,13	66	710,42	2701,13	41 5/16 * 31 1/2 * 40 15/16	12468,67	13918,51
17 15/16 * 17 15/16 * 5/16	5	11,19	41,45	66	738,84	2789,33	41 5/16 * 31 1/2 * 41 5/16	12557,38	14017,54