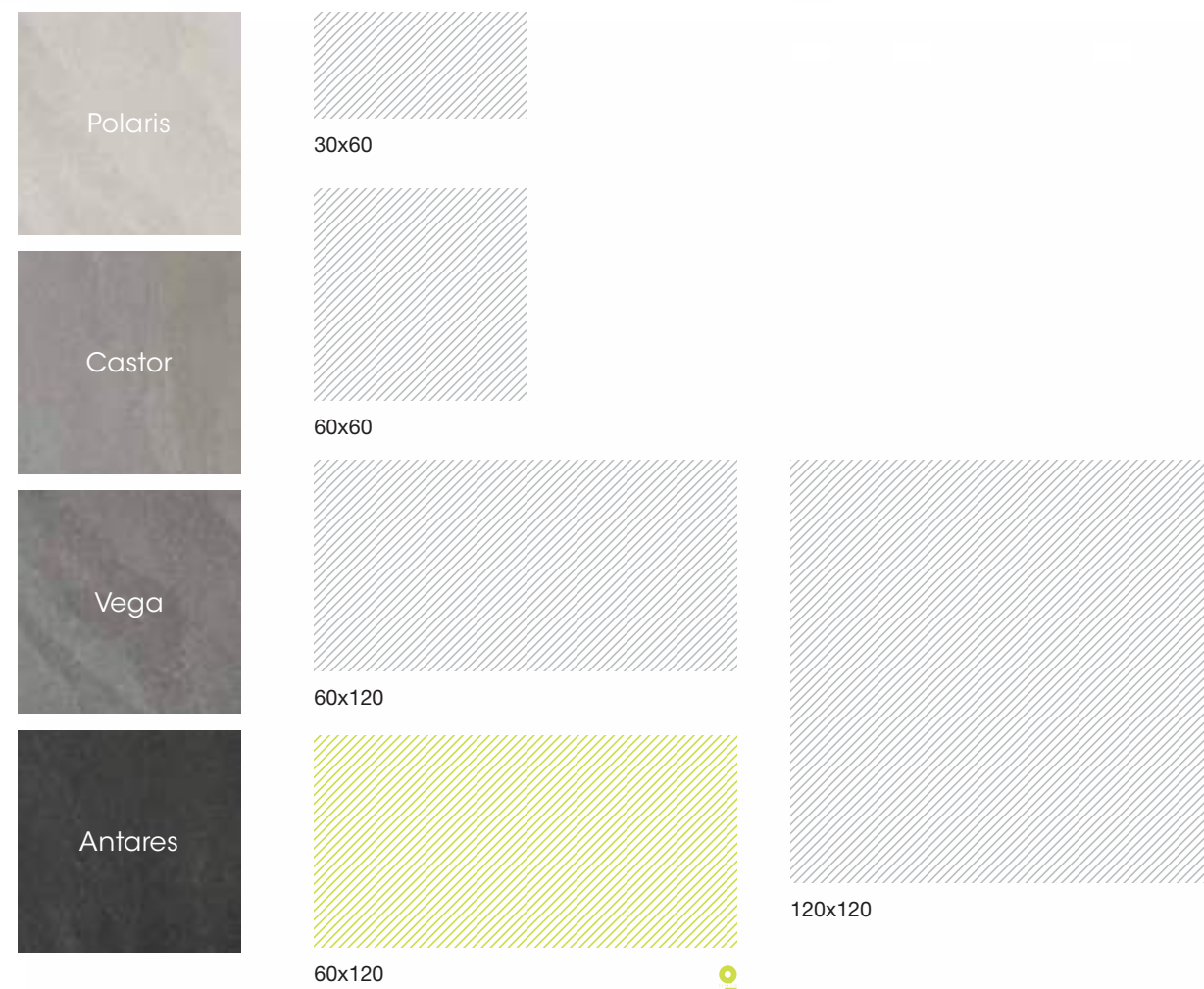


SIRIUS

space comes to life





SIRIUS

space comes to life

Trame suggestive, movimenti grafici e sfumature cromatiche bilanciate in un sublime equilibrio; forza e delicatezza della pietra sedimentaria di riferimento declinate in 4 tonalità marcatamente contemporanee.

Tutto questo è Sirius: uno sfondo cromatico neutro disponibile in molteplici formati per applicazioni a pavimento e rivestimento, indoor e outdoor.

Una versatilità stilistica unica, perfetta per la casa dei tuoi sogni.

Suggestive plots, graphic movements and balanced chromatic shades in a sublime balance; vigour and delicacy of the sedimentary stone of reference displayed in 4 tones decidedly contemporary.

All of this is Sirius: a neutral chromatic background available in multiple formats for outdoor and indoor floor and coating application.

A unique stylistic versatility, perfect for your dream house.



Il design ha il suo habitat.

Pavimenti e rivestimenti sono gli sfondi che fanno da cornice alle nostre vite, ed è con questa filosofia che da oltre quarant'anni Polis sviluppa e realizza le proprie superfici: disegnare spazi che mettano al centro le persone, nei quali trovare ispirazione, sentirsi rappresentati e scrivere le proprie storie più belle.

Floors and walls frame our lives. For over forty years, this is the philosophy that can be found behind Polis and its surfaces: creating spaces that focus on people, where one can find inspiration, feel at home and write the most beautiful stories.

SIRIUS

SIRIUS



Vega



Vega Rett. 60x120



Vega Rett. 120x120 / Vega Rett. 60x120





2.0 Vega Rett. 60x120 / Vega Linee Rett. 30x60

SIRIUS



Antares

SIRIUS

Antares Rett. 60x120



Antares Rett. 60x120 / Antares Mosaico 30x30 / Polaris Mosaico a Barre 29x29



Antares Rett. 60x120 / Polaris Mosaico a Barre 29x29



Antares Rett. 60x120

SIRIUS



Castor



SIRIUS



Castor Rett. 60x120





Castor Rett. 60x60



Castor Rett. 60x60

SIRIUS



Polaris

SIRIUS



Polaris Rett. 60x60



Polaris Rett. 60x60 / Polaris Mosaico Geometrie 26.5x33 / Orion Bianco Rett. 40x120 / Sagitta Bianco Rett. 40x120



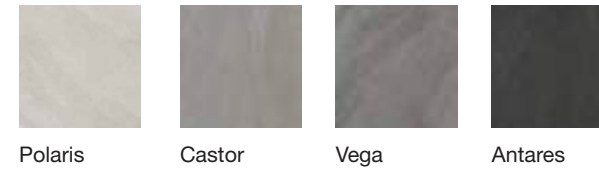
SIRIUS
space comes to life

Gres porcellanato
colorato in massa.

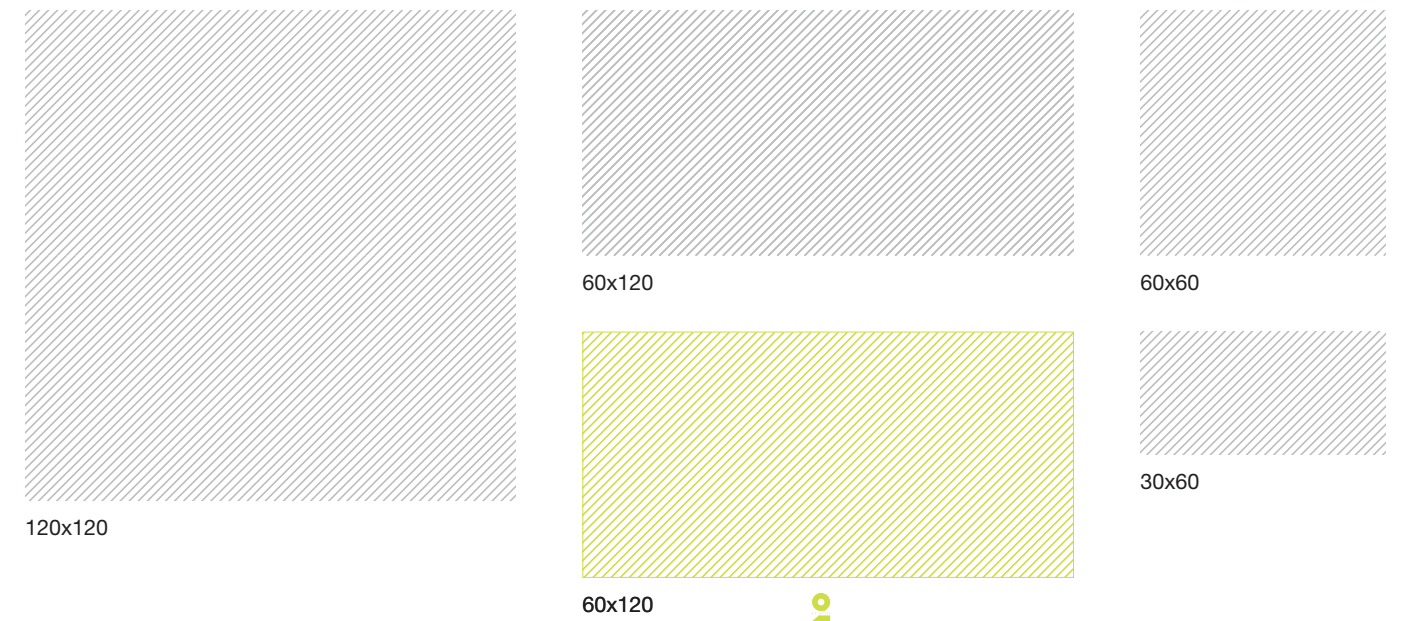
Fully-coloured porcelain tiles
Grès cérame coloré dans la masse
Durchgefärbtes Feinsteinzeug

Superficie Surface / Surface / Oberfläche
Opaca Matt

Colori Colours / Couleurs / Farben



Formati Sizes / Formats / Formaten



Info tecniche Technical info / Info techniques / Technische Info

30x60 - 60x60 - 60x120



120x120

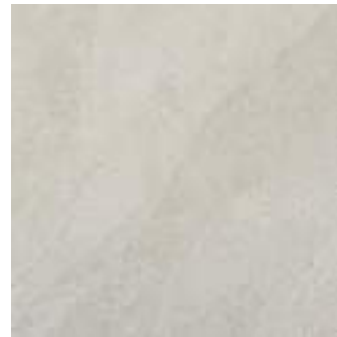




Polaris



0053446 Polaris Rett. mq/203 - box/2
120x120 / 28"x28"



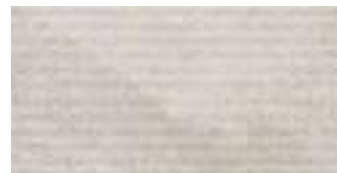
0052727 Polaris Rett. mq/187 - box/4
60x60 / 24"x24"



0052738 Polaris Rett. mq/400 - box/7
0052731 Polaris mq/181 - box/7
30x60 / 12"x24"



0052506 Polaris Rett. mq/200 - box/2
60x120 / 24"x28"



0053537 Polaris Rett. mq/510 - box/7
Linee
30x60 / 12"x24"



0053298 Polaris pz/101
Mosaico box/11
30x30 / 12"x12"



0052843 2.0 Polaris Rett. mq/212 - box/1
60x120 / 24"x28"



0053302 Polaris pz/174
Mosaico Geometrie box/6
26,5x33 / 10,5"x13"



0053318 Polaris pz/154
Mosaico a Barre box/6
29x29 / 11,5"x11,5"

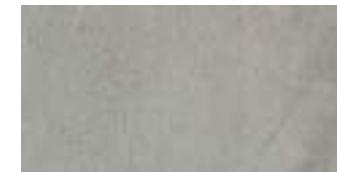
Castor



0053445 Castor Rett. mq/203 - box/2
120x120 / 28"x28"



0052663 Castor Rett. mq/187 - box/4
60x60 / 24"x24"



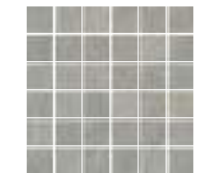
0052737 Castor Rett. mq/400 - box/7
0052730 Castor mq/181 - box/7
30x60 / 12"x24"



0052505 Castor Rett. mq/200 - box/2
60x120 / 24"x28"



0053536 Castor Rett. mq/510 - box/7
Linee
30x60 / 12"x24"



0053297 Castor pz/101
Mosaico box/11
30x30 / 12"x12"



0052842 2.0 Castor Rett. mq/212 - box/1
60x120 / 24"x28"



0053301 Castor pz/174
Mosaico Geometrie box/6
26,5x33 / 10,5"x13"

Vega



0053444 Vega Rett. mq/203 - box/2
120x120 / 28"x28"



0052726 Vega Rett. mq/187 - box/4
60x60 / 24"x24"



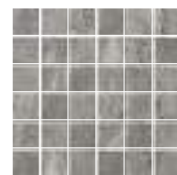
0052733 Vega Rett. mq/400 - box/7
0052729 Vega mq/181 - box/7
30x60 / 12"x24"



0052504 Vega Rett. mq/200 - box/2
60x120 / 24"x28"



0053535 Vega Rett. mq/510 - box/7
Linee
30x60 / 12"x24"



0053299 Vega pz/101
Mosaico box/11
30x30 / 12"x12"



0053303 Vega pz/174
Mosaico Geometrie box/6
26,5x33 / 10,5"x13"



0053319 Vega pz/154
Mosaico a Barre box/6
29x29 / 11,5"x11,5"

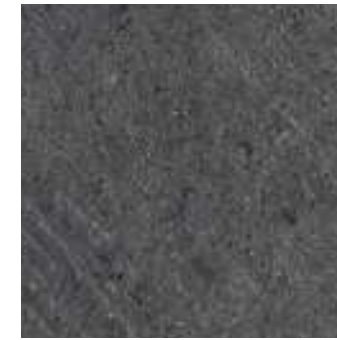


0052841 2.0 Vega Rett. mq/212 - box/1
60x120 / 24"x28"

Antares



0053428 Antares Rett. mq/203 - box/2
120x120 / 28"x28"



0052662 Antares Rett. mq/187 - box/4
60x60 / 24"x24"



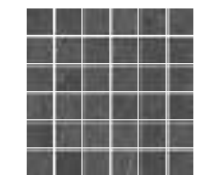
0052732 Antares Rett. mq/400 - box/7
0052728 Antares mq/181 - box/7
30x60 / 12"x24"



0052503 Antares Rett. mq/200 - box/2
60x120 / 24"x28"



0053534 Antares Rett. mq/510 - box/7
Linee
30x60 / 12"x24"



0053296 Antares pz/101
Mosaico box/11
30x30 / 12"x12"



0052840 2.0 Antares Rett. mq/212 - box/1
60x120 / 24"x28"



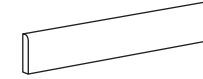
0053300 Antares pz/174
Mosaico Geometrie box/6
26,5x33 / 10,5"x13"



Polaris Rett. 60x60 / Polaris Rett. Linee 30x60

Pezzi speciali

Special trims / Pieces speciales / Sonderstücke



8x60 / 3"x24"
Battiscopa

0053439 Polaris Rett.
0053435 Polaris

pz/88 - box/15
pz/85 - box/15

0053438 Castor Rett.
0053434 Castor

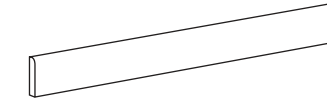
pz/88 - box/15
pz/85 - box/15

0053437 Vega Rett.
0053433 Vega

pz/88 - box/15
pz/85 - box/15

0053436 Antares Rett.
0053432 Antares

pz/88 - box/15
pz/85 - box/15



7,2x120 / 2,8"x48"
Battiscopa

0053443 Polaris Rett.

pz/144 - box/8

0053442 Castor Rett.

pz/144 - box/8

0053441 Vega Rett.

pz/144 - box/8

0053440 Antares Rett.

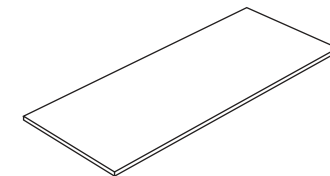
pz/144 - box/8

Disponibili in tutti i colori. Per maggiori informazioni consultare il nostro catalogo 2.0 oppure il nostro sito www.polis.it

Available in all colours. For more information, see our catalogue 2.0 or visit the www.polis.it website.

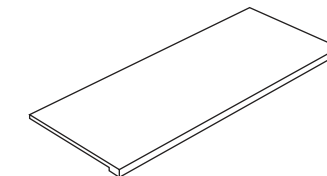
Disponibles dans toutes les couleurs. Pour de plus amples renseignements, veuillez consulter notre Catalogue 2.0 ou notre portail www.polis.it

Sind in allen Farben verfügbar. Für weitere Informationen, siehe bitte unseren Katalog 2.0 oder unsere Website www.polis.it



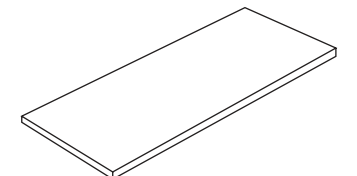
40x120x2 / 16"x48"x0,8"
Gradino costa retta

pz/230



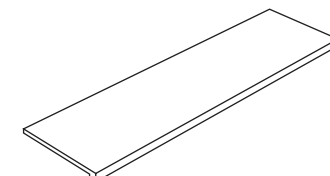
40x120x4x4 / 12"x48"x1,6"x1,6"
Gradino cubo lineare

pz/240



40x120x4x4 / 12"x48"x1,6"x1,6"
Gradino cubo angolare

pz/250



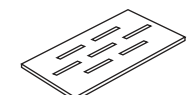
30x120x2 / 16"x48"x0,8"
Elemento a L

pz/226



30x30x5 / 12"x12"x2"
Angolo elemento a L

pz/210



30x60 / 12"x24"
Griglia

pz/228

SIRIUS
space comes to life

Rivestimento in pasta bianca.

White body wall tiles
Revêtement en pâte blanche
Weißscherbige Wandfliesen



Polaris Rett. 60x60 / Orion Bianco Rett. 40x120/ Libra Bianco Rett. 40x120

Superficie Surface / Surface / Oberfläche

Opaca Matt

Colori Colours / Couleurs / Farben



Orion
Bianco



Orion
Grigio



Libra
Bianco



Libra
Grigio



Sagitta
Bianco



Sagitta
Grigio

Formati Sizes / Formats / Formaten



40x120



Orion Grigio Rett. 40x120 / Libra Grigio Rett. 40x120

Rivestimenti

Wall Tiles / Revêtements / Wandfliesen



0053528 Orion Bianco Rett.
40x120 / 15,5"x28"

mq/187 - box/3



0053529 Orion Grigio Rett.
40x120 / 15,5"x28"

mq/187 - box/3

Decori

Decors / Decors / Dekors



0053532 Libra Bianco Rett.
40x120 / 15,5"x28"

mq/188 - box/3



0053533 Libra Grigio Rett.
40x120 / 15,5"x28"

mq/188 - box/3



0053530 Sagitta Bianco Rett.
40x120 / 15,5"x28"

mq/188 - box/3



0053531 Sagitta Grigio Rett.
40x120 / 15,5"x28"

mq/188 - box/3



Sagitta Grigio Rett. 40x120

Imballaggio

Packing / Conditionnement / Verpackung

Formato Size Format Format	Spessore Thickness Epaisseur Stärke	Pezzi/sc Pcs/box Pcs/ctn Stck/kart	M²/sc M²/box M²/ctn M²/kart	Kg/sc Kg/box Kg/ctn Kg/kart	Sc/europol. Box europol. Ctn/europol Kart/europol.	M²/europol. M²/europol. M²/europol. M²/europol.	Kg/europol. Kg/europol. Kg/europol.. Kg/europol.
120x120 Rett.	9	2	2,88	58,4	18	51,84	1051,2
60x120 Rett.	10,5	2	1,44	32,00	32	46,08	1024,00
60x60 Rett.	10	4	1,44	30,00	30	43,20	900,00
30x60	9,5	7	1,26	23,00	40	50,40	920,00
30x60 Rett.	9,5	7	1,26	22,10	40	50,40	884,00
2.0 60x120 Rett.	20	1	0,72	32,00	32	23,04	1.024,00
40X120	10,9	3	1,44	27,13	20	28,8	542,6

prodotti POLIS MANIFATTURE CERAMICHE S.p.A. sono conformi alle normative attualmente in vigore. Le eventuali indicazioni di pesi, misure, dimensioni, colore, tonalità ed altri dati contenuti in tutto il materiale dimostrativo di POLIS MANIFATTURE CERAMICHE S.p.A. hanno carattere puramente indicativo e non saranno vincolanti. Per una maggior valorizzazione dei materiali stonalizzati si consiglia di installare il materiale prelevandolo alternativamente da scatole diverse. Per la posa dei prodotti rettificati si consiglia l'uso di un massetto autolivellante e l'utilizzo di una fuga non inferiore ai 2 mm. POLIS MANIFATTURE CERAMICHE S.p.A. non sarà responsabile per difetti dovuti alla non corretta posa dei materiali. Per prodotti lappati si raccomanda la massima cautela durante le operazioni di movimentazione e posa, evitando in particolare di sfregare le piastrelle l'una contro l'altra e si consiglia, a posa effettuata, di proteggere la pavimentazione con una copertura in cartone fino alla conclusione dei lavori di cantiere. Per il particolare tipo di struttura del prodotto si consiglia una rapida pulizia delle superfici dopo la stuccatura. POLIS MANIFATTURE CERAMICHE consiglia l'utilizzo di prodotti per la pulizia a marchio GEAL. POLIS MANIFATTURE CERAMICHE ha la facoltà di modificare le informazioni tecniche riportate in questo catalogo. I colori e le caratteristiche estetiche dei prodotti sono indicative, in quanto non riproducibili su carta stampata con assoluta fedeltà.

POLIS MANIFATTURE CERAMICHE S.p.A. products comply with the standards at present in force. Any indications of weight, measurements, dimensions, colours, shades and other data contained in the POLIS MANIFATTURE CERAMICHE S.p.A. illustrative material are merely indicative and must not be understood as binding. To enhance the effect of shaded materials it is recommended to alternate items from different boxes while laying. When laying ground products it is advisable to use a self-levelling floor plaster with joints of not less than 2 mm. POLIS MANIFATTURE CERAMICHE S.p.A. do not accept responsibility for defects resulting from the incorrect laying of materials. Maximum care should be taken when handling and laying polished products, in particular avoiding rubbing the tiles against each other. When laying is complete it is advisable to protect the floor with cardboard up until completion of building work on the site. Due to the specific surface of this items, it is advisable to clean the tiles immediately after grouting. POLIS MANIFATTURE CERAMICHE S.p.A. recommends the use of GEAL cleaning products. POLIS MANIFATTURE CERAMICHE S.p.A. reserves the right to modify the technical information reported on this catalogue. The colours and aesthetic features of the products are indicative, as it is not possible to reproduce them faithfully on paper.

Les produits POLIS MANIFATTURE CERAMICHE S.p.A. sont conformes aux normes actuellement en vigueur. Les éventuelles indications de poids, mesures, dimensions, couleurs, tonalités et autres données figurant dans tout le matériel de démonstration de POLIS MANIFATTURE CERAMICHE S.p.A. revêtent un caractère purement indicatif et ne sont pas définitives. Pour valoriser au mieux la variabilité chromatique du matériel, il est conseillé de l'installer en le prélevant de plusieurs boîtes. En ce qui concerne la pose des produits rectifiés, utiliser une chape autolissante ainsi que des joints inter-carreaux non inférieurs à 2 mm. La société POLIS MANIFATTURE CERAMICHE S.p.A. décline toute responsabilité en cas de défauts provoqués par une pose incorrecte du matériel. Faire particulièrement attention aux produits polis durant les opérations de manutention et de pose, en évitant notamment le frottement des carreaux les uns contre les autres, et protéger le carrelage fraîchement posé avec du carton jusqu'au terme des travaux. En raison de la structure particulière du produit, il est conseillé de nettoyer rapidement les surfaces après le jointoiment. POLIS MANIFATTURE CERAMICHE conseille en outre l'utilisation de produits de nettoyage de la marque GEAL. POLIS MANIFATTURE CERAMICHE a la faculté de modifier les informations techniques fournies dans ce catalogue. Les couleurs et les caractéristiques esthétiques des produits ne sont qu'indicatives étant donné qu'il est impossible de les reproduire fidèlement sur du papier imprimé.

Die Produkte POLIS MANIFATTURE CERAMICHE S.p.A. sind konform mit den zurzeit geltenden Vorschriften. Die eventuellen Angaben von Gewichten, Maßen, Abmessungen, Farbe, Farbton und andere im gesamten Anschauungsmaterial von POLIS enthaltenen Daten sind lediglich Ungefähr-Angaben und nicht bindend. Um das Material mit variierenden Farbtönen stärker zu valorisieren ist es ratsam die Installation mit abwechselnd von verschiedenen Kartons entnommenem Material vorzunehmen. Für die Verlegung der geschliffenen Produkte empfiehlt sich die Benutzung eines selbstnivellierenden Estrichs und die Verwendung einer Fuge von mindestens 2 mm. POLIS MANIFATTURE CERAMICHE S.p.A. haftet nicht für Mängel, die durch eine fehlerhafte Verlegung des Materials verursacht wurden. Bei geläpften Produkten empfiehlt sich äußerste Vorsicht bei den Beförderungs- und Verlegungsarbeiten. Vor allem muss vermieden werden, dass sich die Fliesen aneinander reiben und es ist ratsam nach erfolgter Verlegung den Fußbodenbelag bis zum Abschluss der Arbeiten an der Baustelle mit Karton abzudecken. Auf Grund der besonderen Struktur des Produkts sollte nach dem Verlegen eine schnelle Reinigung erfolgen. POLIS MANIFATTURE CERAMICHE S.p.A. empfiehlt die Verwendung von Reinigungsprodukten der Marke GEAL. POLIS MANIFATTURE CERAMICHE ist befugt die in diesem Katalog enthaltenen technischen Informationen zu ändern. Die Farben und die ästhetischen Charakteristiken dienen als Hinweise, da sie auf gedrucktem Papier nicht identisch reproduzierbar sind.





41123 MODENA, ITALY
VIA SALLUSTIO, 15
TEL. +39 059 881411 - FAX +39 059 881498
info@polis.it

STABILIMENTO:
46023 BONDENO DI GONZAGA (MN)
VIA PAVESA, 24
TEL. +39 0376 593001 - FAX +39 0376 54381

www.polis.it