

# shoWall . Book





Con ShoWall la ceramica dà spettacolo: pannelli decorativi in gres porcellanato progettati per stupire arredando, tra motivi grafici e suggestioni naturali rilette in chiave artistica.

With ShoWall ceramics puts on a show: decorative panels in porcelain stoneware designed to provide amazing decor, amid graphic motifs and natural evocations reinterpreted artistically.

Avec ShoWall, la céramique joue les vedettes : des panneaux décoratifs en grès cérame conçus pour surprendre tout en habillant, avec des motifs graphiques et des suggestions naturelles revisitées dans un esprit artistique.

Mit ShoWall stellt sich Keramik zur Schau: Dekorpaneele aus Feinsteinzeug gestalten erstaunliche Ausstattungen mit grafischen Mustern und natürlichen Effekten in künstlerischer Aufmachung.

С помощью ShoWall керамика выходит на сцену, предлагая декоративные керамогранитные панели, призванные удивлять оформлением, украшенные графическими мотивами и природными рисунками, переосмысленными в художественном ключе.





## concept

**05**  
A DIALOGUE BETWEEN  
ARTISTIC INSPIRATION, NATURE AND DESIGN

**07**  
INSPIRING DECORATION. PURE CERAMIC MATTER.

**09**  
DECORATION RANGE

## range & ideas

**13**  
INSPIRATION GALLERY

**101**  
GRAND DECORATION MADE SIMPLE

**103**  
RANGE



# shoWall

A DIALOGUE BETWEEN  
ARTISTIC INSPIRATION,  
NATURE AND DESIGN







Inspiring  
decoration.  
Pure ceramic  
matter.

SHOWALL ESPLORA LA  
RICCHEZZA MATERICA DEL  
TERZO FUOCO CERAMICO  
ATTRAVERSO UN DESIGN  
RAFFINATO DAGLI ESITI  
SCENOGRAFICI.

Showall explores the textural  
richness of third firing  
ceramics through a refined  
design with spectacular  
outcomes.

Showall explore la richesse  
des matières du troisième  
feu céramique à travers un  
design raffiné aux résultats  
scénographiques.

Showall raffinierte  
Designs, Erforschung  
der Materie durch eine  
Vielfalt an kostbaren  
Motiven im keramischen  
Drittbrandverfahren.

showall изучает богатство  
керамического материала  
трехкратного обжига  
посредством изысканного  
дизайна с эффектными  
результатами.



# Decoration Range.

SERENISSIMA



UN ESTESO CAMPIONARIO DI DECORI IN GRES PORCELLANATO ABBINABILI ALLE COLLEZIONI FIRMATE SERENISSIMA E CIR MANIFATTURE CERAMICHE, PER SINERGIE STILISTICHE CREATIVE E RAFFINATE.

A large selection of decor in porcelain stoneware that can be matched with collections designed by serenissima and cir manifatture ceramiche, to produce creative and refined synergies between different styles.

Un large éventail de décors en grès cérame pouvant être combinés avec les collections de Serenissima et de Cir Manifatture Ceramiche, pour des synergies de style créatives et raffinées.

Eine breite Auswahl an Feinsteinzeug-Dekoren, die mit den Kollektionen von Serenissima und Cir Manifatture Ceramiche kombiniert werden können und kreative und raffinierte Stilsynergien gestalten.

Большой ассортимент керамогранитных декоров, сочетающихся с коллекциями от Serenissima и CIR Manifatture Ceramiche, создает креативную и изысканную стилистическую синергию.

## Foliages

59 Fabulous Pink



63 Fenice



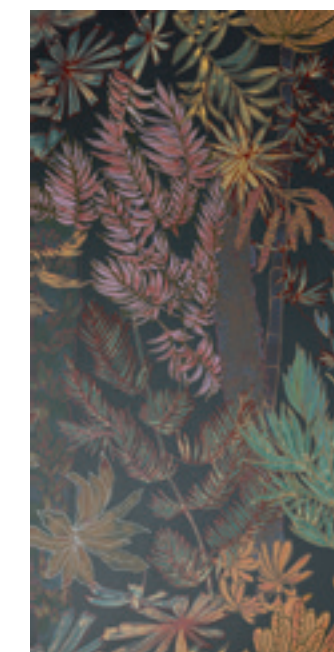
61 Fabulous Blue



75 Garden



65 Forest



21 Oasi

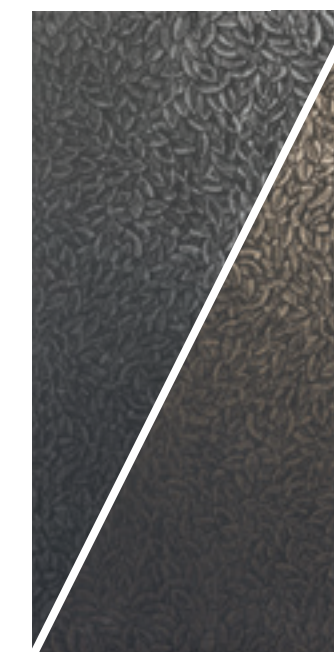


29 Pixel Leaf



49 Odalisca

17 Foliage Silver



15 Foliage Gold

73 Myfair White



71 Myfair Grey



45 Palm Beach



25 Savannah

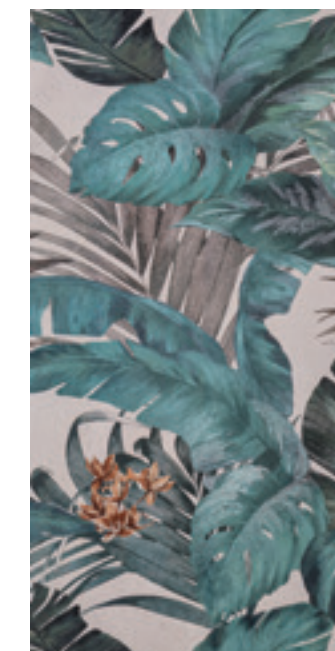


27 Tropical

53 White Leaf



51 Black Leaf



55 Jungle

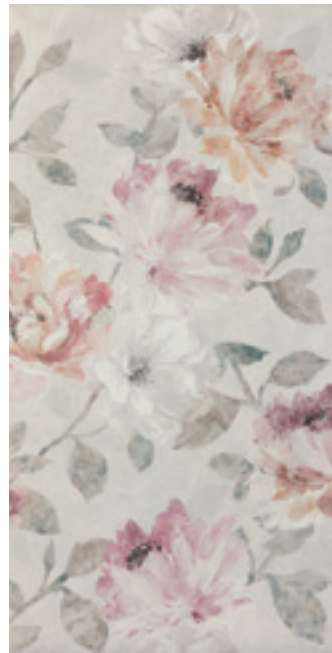


47 Amazonia Blu

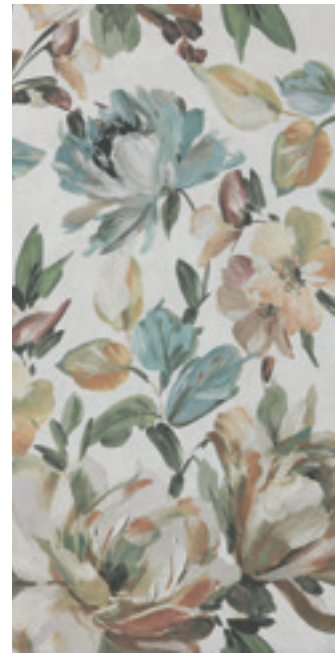


# Decoration Range.

## Flowers



39 Afrodite



35 Ninfa



31 Poppy



19 Deserto



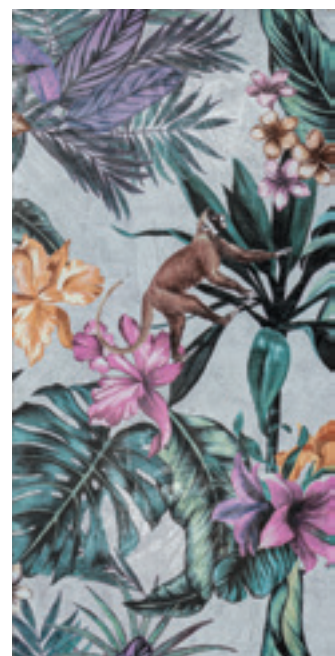
69 Art Deco

## Geometrics

## Chromagic



43 Flora Aqua



67 Monkey

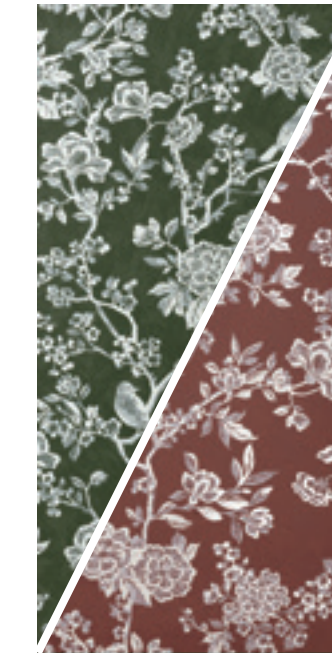


57 Spring



79 Floral Blue

83 Floral Olive



81 Floral Bordeaux

93 Toile De Jouy Olive



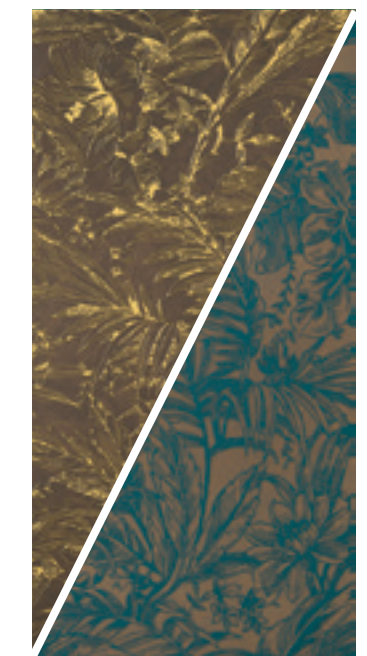
95 Toile De Jouy Bordeaux

89 Tian Ocre



91 Tian Rose

99 Herbarium Ocre



97 Herbarium Emerald



85 Tian Emerald



# Inspiration Gallery

**L'ISPIRAZIONE È SERVITA.**  
UN AMPIO ASSORTIMENTO  
DI STILI, DECINE DI DECORI  
COMPONIBILI E CONTINUI,  
PRATICI E SCENOGRAFICI.

**Inspiration is served.**  
A wide collection of styles,  
tens of modular and repeated,  
practical and scenic decor.

**L'inspiration est de rigueur.**  
Un large assortiment de  
styles, des dizaines de décors  
modulaires et continus,  
pratiques et scénographiques.

**Die Inspiration ist serviert.**  
Ein umfangreiches  
Stilsortiment, Dutzende  
von kombinierbaren und  
kontinuierlichen, praktischen  
und szenografischen Dekoren.

**Вдохновение готово.**  
Большое предложение  
стилей, десятки  
модульных, а также  
практичных и эффектных  
сплошных декоров.



# foliage gold

WALL 23



## SIZE

60X120  
24"X48"  
rett

## MATCHING



PANTONE  
S 2005-G90Y



PANTONE  
S 3005-Y20R



PANTONE  
S 4502-Y

## VERTICAL



## HORIZONTAL







# foliage silver

WALL 24



## SIZE

60X120  
24"X48"  
rett

## MATCHING



PANTONE  
S 1502-Y50R

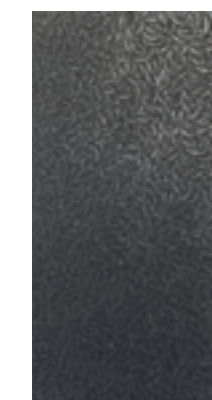


PANTONE  
S 3005-Y20R

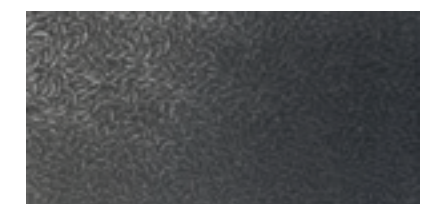


PANTONE  
S 5500-N

## VERTICAL



## HORIZONTAL





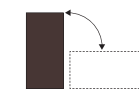


# deserto

WALL 25



SIZE



120X120  
48"X48"  
rett

Comp. 2 pz  
A + B

MATCHING



PANTONE  
S 2020-Y60R

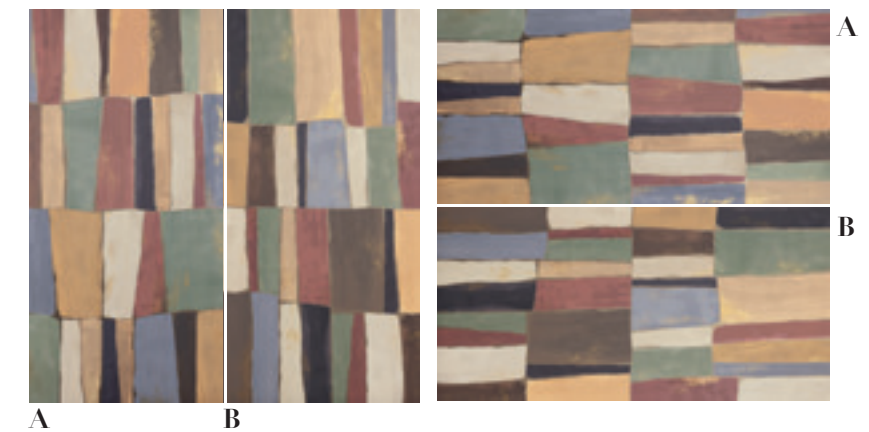


PANTONE  
S 1005-Y



PANTONE  
S 6000-N

VERTICAL







Floor // Tadelakt Berberè 60x120 Rett // CIR



SIZE

120X120  
48"X48"  
rett

Comp. 2 pz  
A + B

MATCHING



PANTONE  
S 2010-Y90R



PANTONE  
S 2005-Y20R



PANTONE  
S 2005-B80G

VERTICAL



A

B



# savannah

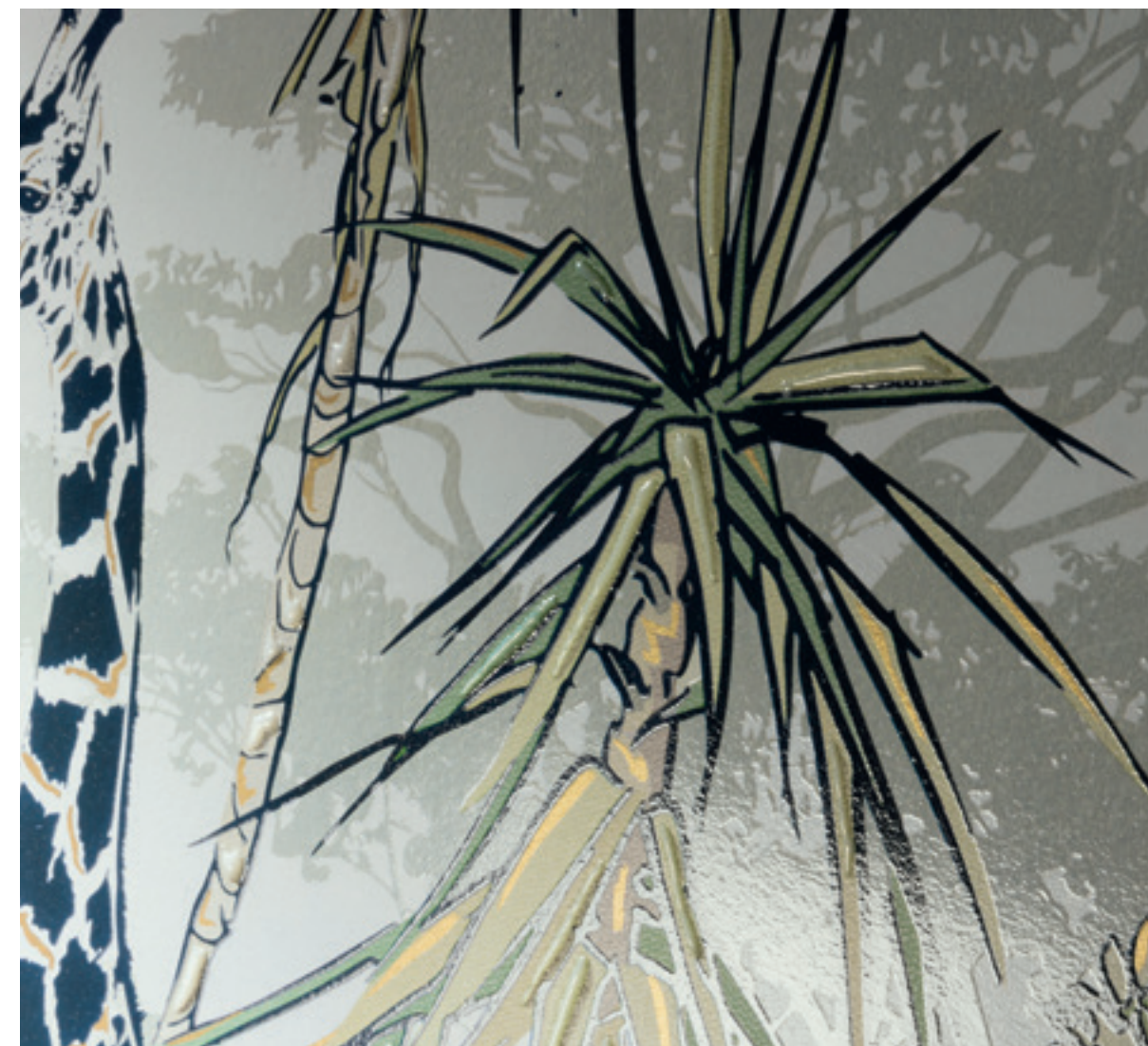
WALL 27





# savannah

WALL 27



**SIZE**

120X120  
48"X48"  
rett

Comp. 2 pz  
A + B

**MATCHING**



PANTONE  
S 2005-N



PANTONE  
S 1010-Y



PANTONE  
S 1005-G10Y

**VERTICAL**



A

B





# tropical

WALL 28



**SIZE**

120X120  
48"X48"  
rett

Comp. 2 pz  
A + B

**VERTICAL**



A

B

**MATCHING**



PANTONE  
S 4000-N



PANTONE  
S 2500-G80Y



PANTONE  
S 4010-G30Y





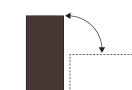
# pixel leaf

WALL 29



SIZE

60X120  
24"X48"  
rett



MATCHING



PANTONE  
S 2500-Y60R



PANTONE  
S 6500-Y50R



PANTONE  
S 2020-R70B

VERTICAL



HORIZONTAL



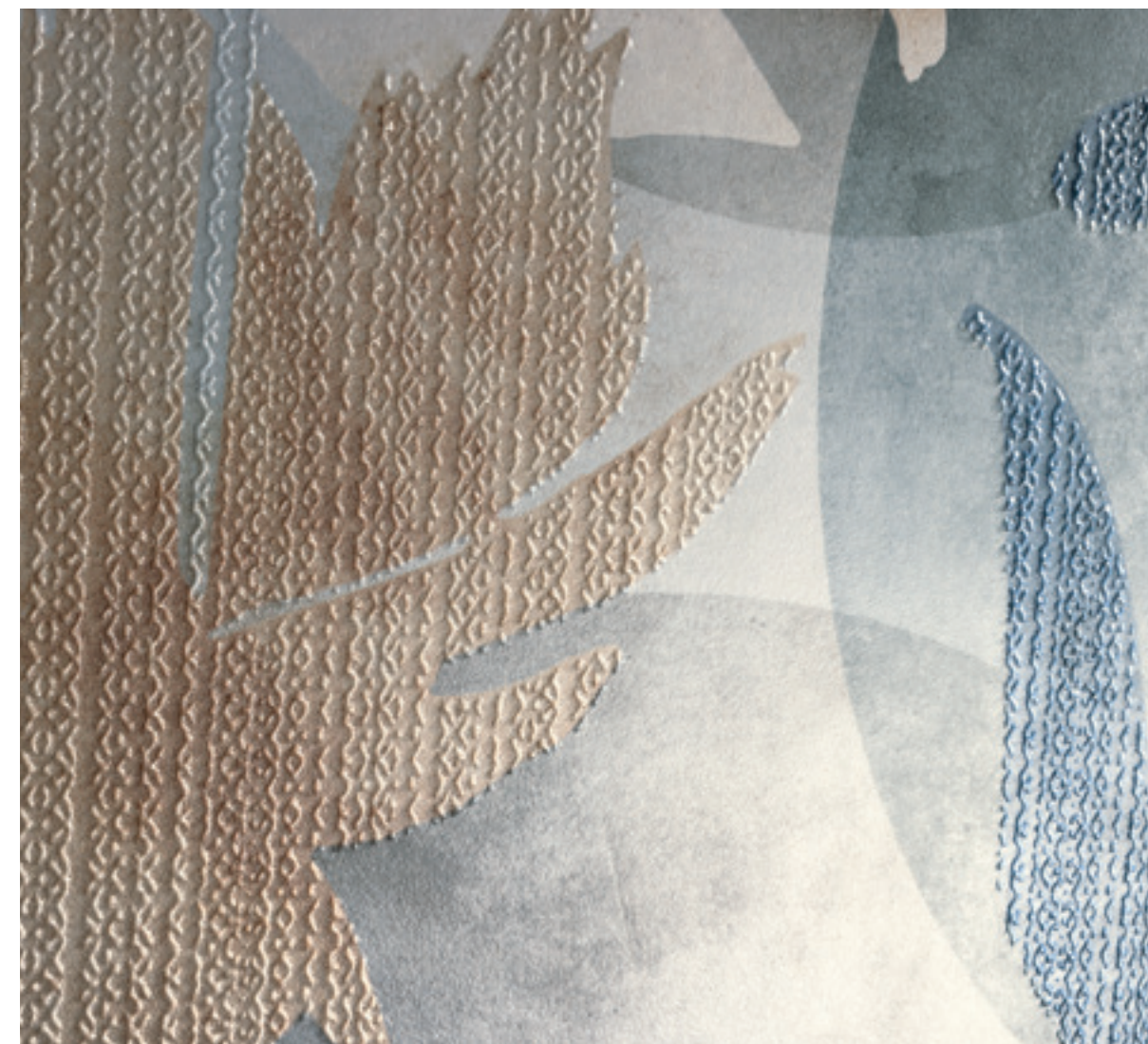






# poppy

WALL 30



#### SIZE

120X120  
48"X48"  
rett

Comp. 2 pz  
A + B

#### MATCHING



PANTONE  
S 3502-Y



PANTONE  
S 1000-N



PANTONE  
S 2010-R60B

#### VERTICAL



A

B



ninfa

WALL 31



ninfa

WALL 31



SIZE

120X120  
48"X48"  
rett

Comp. 2 pz  
A + B

MATCHING



PANTONE  
S 2010-Y70R



PANTONE  
S 3005-Y20R



PANTONE  
S 3005-B80G

VERTICAL



A

B



# afrodite

WALL 32



## SIZE

120X120  
48"X48"  
rett

Comp. 2 pz  
A + B

## MATCHING



PANTONE  
S 3010-Y20R

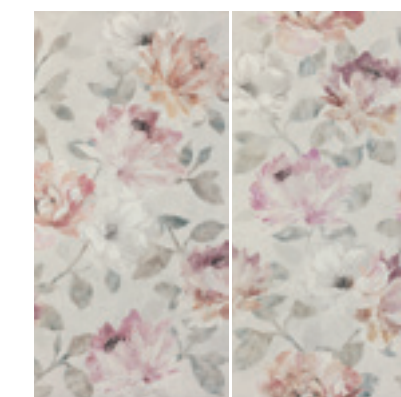


PANTONE  
S 4010-Y70R



PANTONE  
S 6005-Y50R

## VERTICAL



A

B





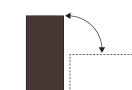
# flora avorio

WALL 33



**SIZE**

60X120  
24"X48"  
rett



**MATCHING**



PANTONE  
S 1002-Y



PANTONE  
S 3005-Y20R

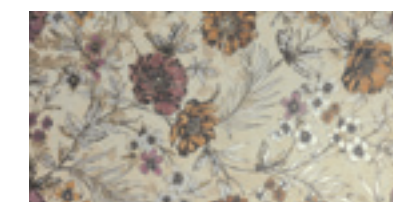


PANTONE  
S 4050-Y10R

**VERTICAL**



**HORIZONTAL**







Floor // Concreta Titanio 100x100 Rett // SERENISSIMA

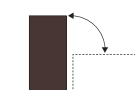
# flora aqua

WALL 34



SIZE

60X120  
24"X48"  
rett



MATCHING



PANTONE  
S 1002-Y



PANTONE  
S 4005-G20Y

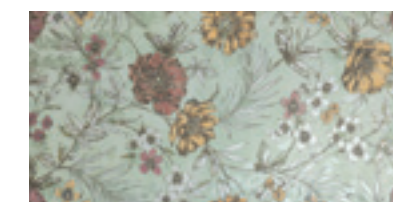


PANTONE  
S 1005-Y10R

VERTICAL



HORIZONTAL







# palm beach

WALL 17



## SIZE

120X120  
48"X48"  
rett

Comp. 2 pz  
A + B

## MATCHING



PANTONE  
S 3000-N



PANTONE  
S 3005-Y80R



PANTONE  
S 5005-R80B

## VERTICAL



A

B





# amazzonia blu

WALL 18



**SIZE**

120X120  
48"X48"  
rett

Comp. 2 pz  
A + B

**MATCHING**



PANTONE  
S 0502-R



PANTONE  
S 3020-R70B



PANTONE  
S 2500-N

**VERTICAL**



A

B



# odalisca

WALL 22



## SIZE

60X240 Comp. 2 pz  
24"X96" A + B  
rett

## VERTICAL



## MATCHING

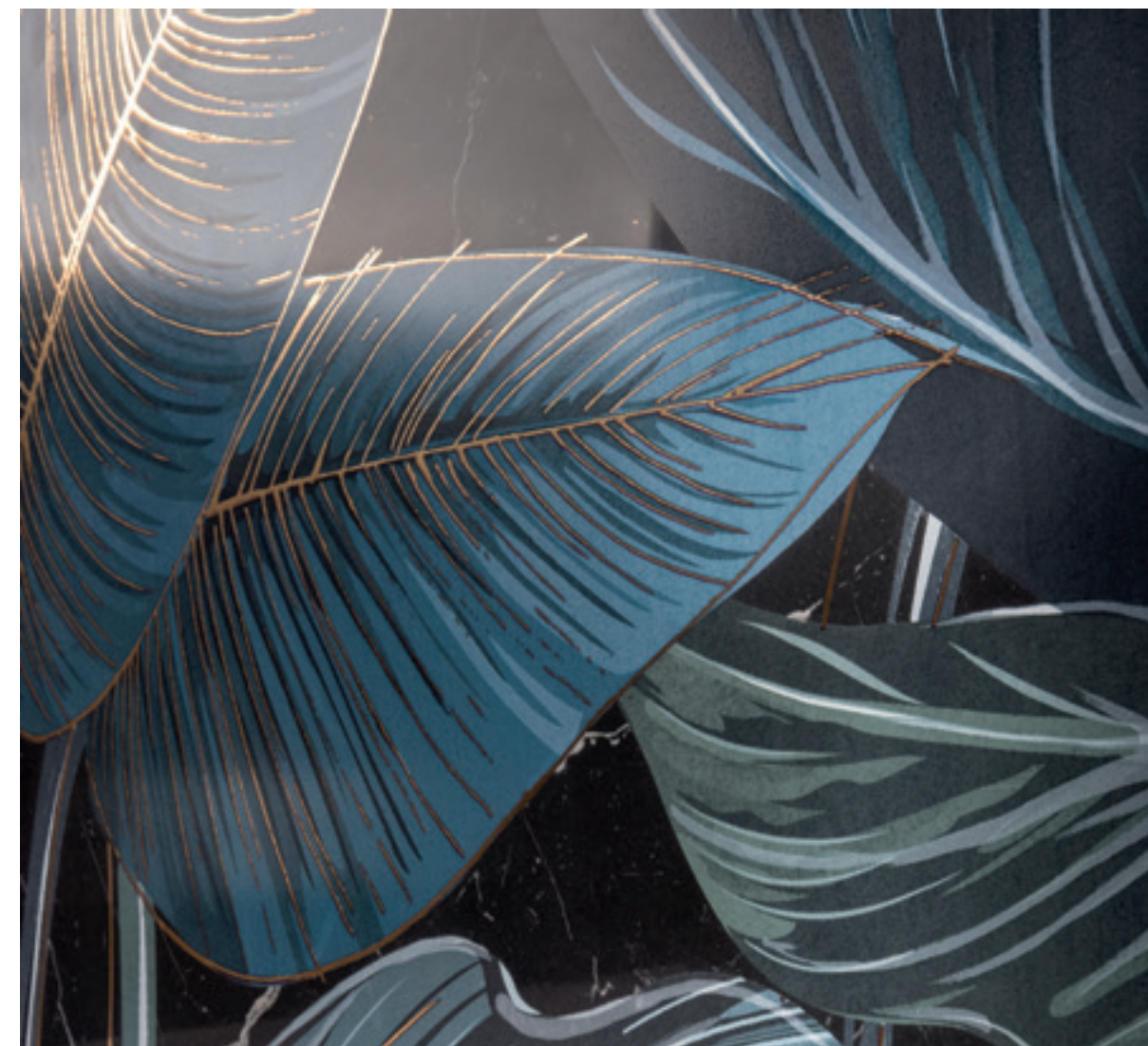






# black leaf

WALL 06



## SIZE

120X120  
48"X48"  
rett

Comp. 2 pz  
A + B

## MATCHING



PANTONE  
S 4020-R90B



PANTONE  
S 2005-Y70R



PANTONE  
S 5500-N

## VERTICAL



A

B





# white leaf

WALL 07



**SIZE**

120X120  
48"X48"  
rett

Comp. 2 pz  
A + B

**MATCHING**



PANTONE  
S 3502-B



PANTONE  
S 2005-Y20R



PANTONE  
S 7005-N

**VERTICAL**



A

B



# jungle

WALL 09



#### SIZE

120X120  
48"X48"  
rett

Comp. 2 pz  
A + B

#### MATCHING



PANTONE  
S 1005-R20B



PANTONE  
S 2005-B80G



PANTONE  
S 4005-Y80R

#### VERTICAL



A

B



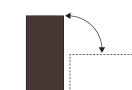
# spring

WALL 10



## SIZE

60X120  
24"X48"  
rett



## MATCHING



PANTONE  
S 3000-N

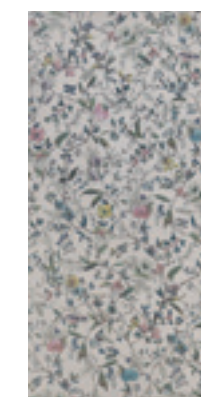


PANTONE  
S 2500-Y60R

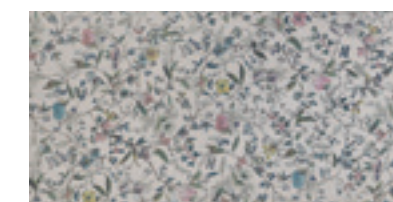


PANTONE  
S 6500-Y50R

## VERTICAL



## HORIZONTAL





# fabulous pink

WALL 11



## SIZE

60X120  
24"X48"  
rett

## MATCHING



PANTONE  
S 0502-R



PANTONE  
S 3030-Y90R



PANTONE  
S 2500-R80B

## VERTICAL







Floor // Studio 50 Peltro 100x100 Rett // SERENISSIMA

# fabulous blue

WALL 12



SIZE

60X120  
24"X48"  
rett

MATCHING



PANTONE  
S 5010-R90B



PANTONE  
S 2010-G20Y



PANTONE  
S 2500-N

VERTICAL





# fenice

WALL 13



## SIZE

120X120  
48"X48"  
rett

Comp. 2 pz  
A + B

## MATCHING



## VERTICAL







# forest

WALL 14



## SIZE

120X120  
48"X48"  
rett

Comp. 2 pz  
A + B

## MATCHING



PANTONE  
S 3005-Y80R



PANTONE  
S 3010-G



PANTONE  
S 3502-G

## VERTICAL



A

B



# monkey

WALL 15



## SIZE

120X120  
48"X48"  
rett

Comp. 2 pz  
A + B

## MATCHING



PANTONE  
S 1040-R60B



PANTONE  
S 2030-B70G



PANTONE  
S 1000-N

## VERTICAL



A

B





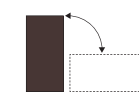
# art deco

WALL 01



SIZE

60X120  
24"X48"  
rett



MATCHING



PANTONE  
S 2050-Y



PANTONE  
S 2040-B



PANTONE  
S 2500-R80B

VERTICAL



HORIZONTAL







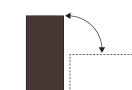
# myfair grey

WALL 02



## SIZE

60X120  
24"X48"  
rett



## MATCHING



PANTONE  
S 0510-R30B



PANTONE  
S 4030-R70B



PANTONE  
S 3502-G

## VERTICAL



## HORIZONTAL





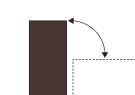
# myfair white

WALL 03



SIZE

60X120  
24"X48"  
rett



MATCHING



PANTONE  
S 1010-Y80R



PANTONE  
S 1575-R10B



PANTONE  
S 3502-G

VERTICAL



HORIZONTAL





# garden

WALL 08



## SIZE

120X120  
48"X48"  
rett

Comp. 2 pz  
A + B

## MATCHING



PANTONE  
S 0530-Y



PANTONE  
S 2030-R80B



PANTONE  
S 1002-B50G

## VERTICAL



A

B



Chromagic  
ignites the desire  
for decor.

RAFFINATI MOTIVI VEGETALI,  
BOUQUET FLOREALI,  
GEOMETRIE MORBIDE E  
PREZIOSI ARABESCHI DAI  
CROMATISMI VIBRANTI.

Refined plant motifs,  
bouquets of flowers, smooth  
shapes and precious  
arabesques with vibrant  
colors.

Des motifs végétaux raffinés,  
des bouquets floraux, des  
géométries délicates et de  
précieuses arabesques aux  
couleurs vibrantes.

raffinierte Pflanzmuster,  
Blumenmotive, gewundene  
Geometrien und edle  
Arabesken mit vibrierenden  
Farbeffekten.

утонченные растительные  
мотивы, цветочные букеты,  
мягкая геометрия и ценные  
арабески в решительных  
цветах.



# floral blue



SIZE

60X120  
24"X48"  
rett

MATCHING



PANTONE  
S 2020-Y30R

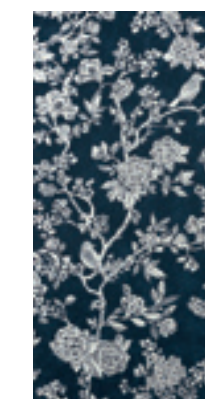


PANTONE  
S 4020-B90B



PANTONE  
S 3502-B

VERTICAL








# floral bordeaux



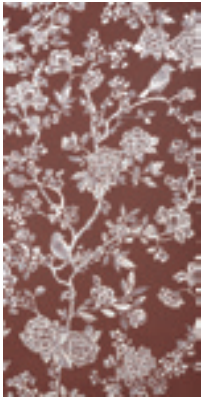
**SIZE**

60X120  
24"X48"  
rett

**MATCHING**

-  PANTONE S 1005-R20B
-  PANTONE S 1000-N
-  PANTONE S 2500-Y60R

**VERTICAL**





# floral olive



## SIZE

60X120  
24"X48"  
rett

## MATCHING



PANTONE  
S 2010-G50Y

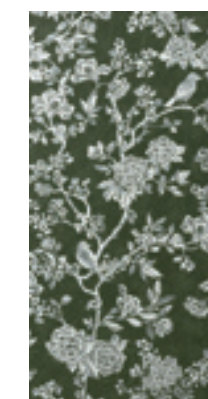


PANTONE  
S 2005-Y20R



PANTONE  
S 2500-N

## VERTICAL





tian emerald





# tian emerald



## SIZE

60X120  
24"X48"  
rett

30X60  
12"X24"  
rett

## MATCHING



PANTONE  
S 5020-G

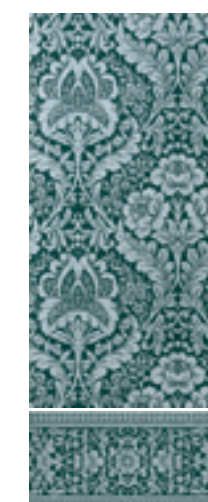


PANTONE  
S 1502-B50G



PANTONE  
S 1005-Y20R

## VERTICAL





# tian ocre



## SIZE

60X120  
24"X48"  
rett

30X60  
12"X24"  
rett

## MATCHING



PANTONE  
S 0505-G80Y



PANTONE  
S 3500-N



PANTONE  
S 1005-Y10R

## VERTICAL





# tian rose



Floor // Acanto Miele 20x120 Rett // SERENISSIMA



## SIZE

60X120  
24"X48"  
rett

30X60  
12"X24"  
rett

## MATCHING



PANTONE  
S 1005-R20B



PANTONE  
S 3005-Y80R



PANTONE  
S 1000-N

## VERTICAL





# toile de jouy olive



## SIZE

60X120  
24"X48"  
rett

30X60  
12"X24"  
rett

## MATCHING



PANTONE  
S 2010-G50Y



PANTONE  
S 1010-Y



PANTONE  
S 2060-Y40R

## VERTICAL







# toile de jouy bordeaux



## SIZE

60X120  
24"X48"  
rett

30X60  
12"X24"  
rett

## MATCHING



PANTONE  
S 1005-R20B

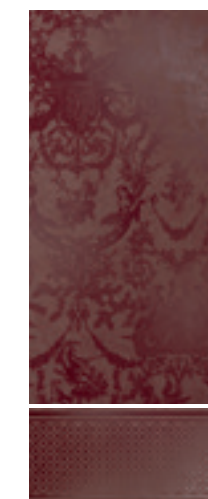


PANTONE  
S 1502-B



PANTONE  
S 1000-N

## VERTICAL







# herbarium emerald



**SIZE**

60X120  
24"X48"  
rett

**MATCHING**



PANTONE  
S 2005-B80G



PANTONE  
S 5500-N



PANTONE  
S 2050-Y

**VERTICAL**







# herbarium ocre



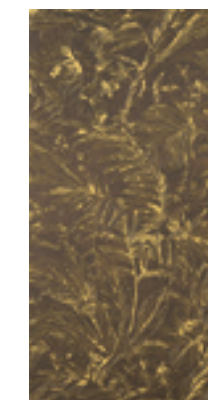
**SIZE**

60X120  
24"X48"  
rett

**MATCHING**

	
PANTONE S 2020-Y60R	PANTONE S 1060-G70Y
	
PANTONE S 1005-Y20R	

**VERTICAL**





## Real ceramic and artisanal decoration

MATERIA LAVORATA IN TERZO  
FUOCO, RICCA AL TATTO E ALLA  
VISTA.

Third-fired material, pleasing to  
the touch and to the eye.

Matière traitée en troisième feu,  
riche au toucher et à la vue.

Im Drittbrand bearbeitete Materie,  
die dem Auge und Tastsinn  
schmeichelt.

Материал троекратного обжига  
приятен на ощупь и на вид.

## Ready inspirations collection

AMPIO ASSORTIMENTO DI  
DECORAZIONI COMPONIBILI E  
CONTINUE, CON DIVERSI MOOD  
E ISPIRAZIONI.

Decorative modules already  
available in stock or deliverable  
within ordinary times.

Modules décoratifs déjà  
disponibles en stock ou livrables  
dans des délais standards.

Dekormodule, bereits auf Lager  
oder in normaler Zeit lieferbar.

Декоративные модули со склада  
или же поставляемые в обычные  
сроки.

## Smart and modular

MODULI 120x60, FACILI DA  
TRASPORTARE E POSARE.  
SI ADATTANO SENZA SFRIDO A  
PARETI GRANDI E PICCOLE.

Modules 120x60, easy to transport  
and lay. They adapt to large and  
small walls without wastage.

Des modules 120x60, faciles  
à transporter et à poser. Ils  
s'adaptent sans gaspillage aux  
grands et petits murs.

Module 120x60, transportier- und  
verlegeleicht. Sie passen sich  
kleinen und großen Wänden an,  
ohne Abfallmaterial.

Модули 120x60 см просто  
перевозятся и укладываются.  
Они подходят как для больших,  
так и для маленьких стен, не  
образуя отходы.



# Grand decoration made simple.

## Standard range & stock items

MODULI DECORATIVI GIÀ  
DISPONIBILI A MAGAZZINO  
O CONSEGNAIBILI IN TEMPI  
ORDINARI.

A wide assortment of modular  
and continuous decorations,  
featuring diverse moods and  
inspirations.

Large assortment de décorations  
modulaires et continues, avec  
différentes atmosphères et  
inspirations.

Große Auswahl an  
zusammenstellbaren und  
durchgehenden Dekors, mit  
verschiedenen Moods und  
Inspirationen.

Большой ассортимент  
модульного и сплошного декора,  
с различными стилями и  
источниками вдохновения.

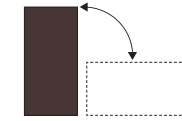




# shoWall

Foliages

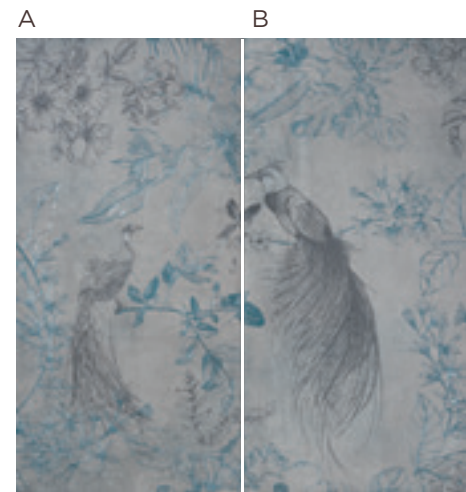
**SOLO RIVESTIMENTO**  
For use on walls only  
Faiences uniquement  
Nur Wandverkleidung  
Только облицовка



**POSA SIA VERTICALE CHE ORIZZONTALE**  
Both vertical and horizontal laying  
Pose verticale et horizontale  
Sowohl senkrechte als auch waagerechte Verlegung  
Как вертикальная, так и горизонтальная укладка

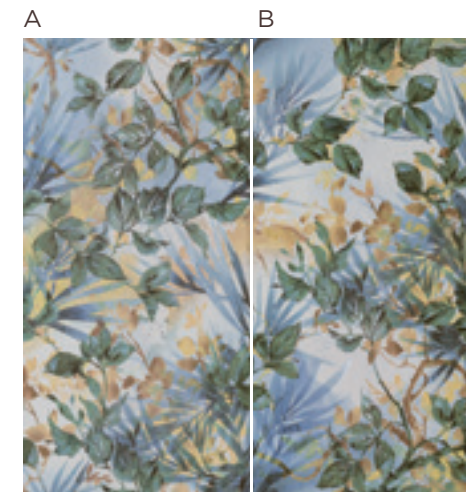
**range**

WALL 13 **FENICE**



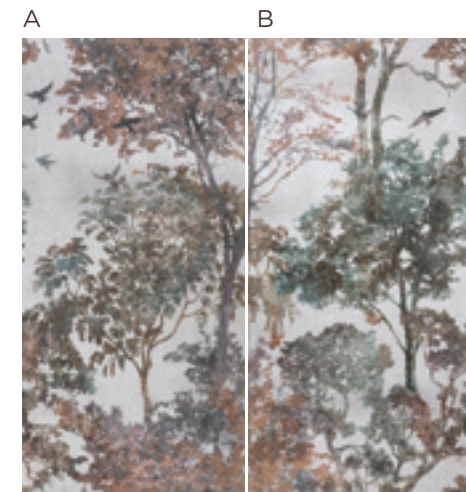
120x120 48"x48" rett  
A+B Comp. 2 pz 60x120 24"x48" rett

WALL 08 **GARDEN**



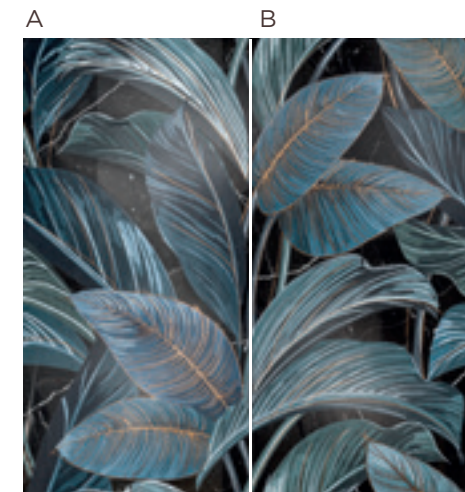
120x120 48"x48" rett  
A+B Comp. 2 pz 60x120 24"x48" rett

WALL 14 **FOREST**



120x120 48"x48" rett  
A+B Comp. 2 pz 60x120 24"x48" rett

WALL 06 **BLACK LEAF**



120x120 48"x48" rett  
A+B Comp. 2 pz 60x120 24"x48" rett

WALL 07 **WHITE LEAF**



120x120 48"x48" rett  
A+B Comp. 2 pz 60x120 24"x48" rett

WALL 28 **TROPICAL**



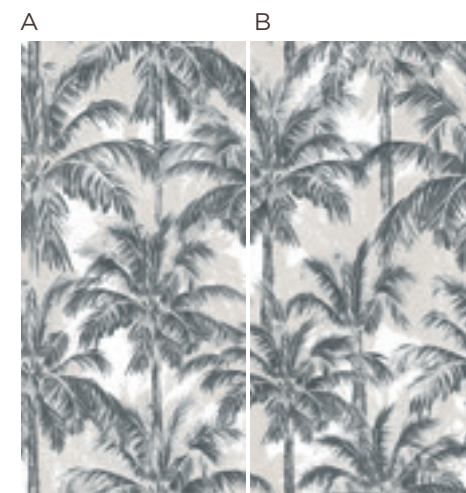
120x120 48"x48" rett  
A+B Comp. 2 pz 60x120 24"x48" rett

WALL 27 **SAVANNAH**



120x120 48"x48" rett  
A+B Comp. 2 pz 60x120 24"x48" rett

WALL 17 **PALM BEACH**



120x120 48"x48" rett  
A+B Comp. 2 pz 60x120 24"x48" rett

WALL 11 **FABULOUS PINK**



60x120 24"x48" rett

WALL 12 **FABULOUS BLUE**



60x120 24"x48" rett

WALL 29 **PIXEL LEAF**



60x120 24"x48" rett

WALL 22 **ODALISCA**



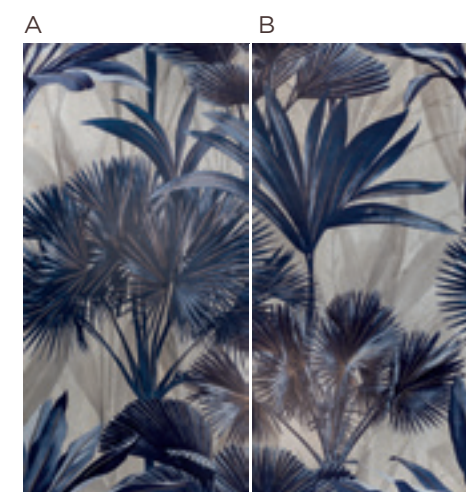
60x240 24"x96" rett  
A+B Comp. 2 pz 60x120 24"x48" rett

WALL 26 **OASI**



120x120 48"x48" rett  
A+B Comp. 2 pz 60x120 24"x48" rett

WALL 18 **AMAZZONIA BLU**



120x120 48"x48" rett  
A+B Comp. 2 pz 60x120 24"x48" rett

WALL 09 **JUNGLE**



120x120 48"x48" rett  
A+B Comp. 2 pz 60x120 24"x48" rett

WALL 02 **MYFAIR GREY**



60x120 24"x48" rett

WALL 03 **MYFAIR WHITE**



60x120 24"x48" rett

WALL 23 **FOLIAGE GOLD**



60x120 24"x48" rett

WALL 24 **FOLIAGE SILVER**

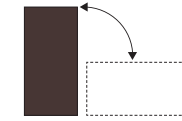


60x120 24"x48" rett



# shoWall

**SOLO RIVESTIMENTO**  
For use on walls only  
Faïences uniquement  
Nur Wandverkleidung  
Только облицовка

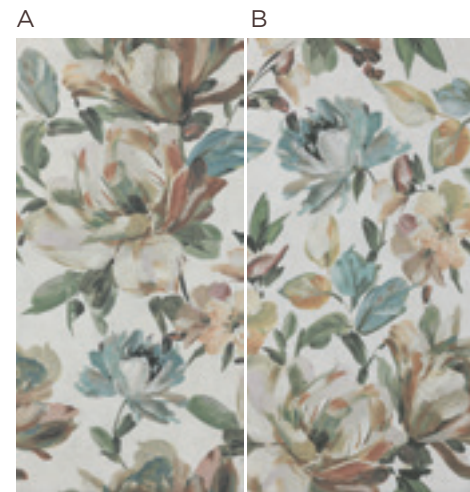


**POSA SIA VERTICALE CHE ORIZZONTALE**  
Both vertical and horizontal laying  
Pose verticale et horizontale  
Sowohl senkrechte als auch waagerechte Verlegung  
Как вертикальная, так и горизонтальная укладка

**range**

Flowers

## WALL 31 NINFA



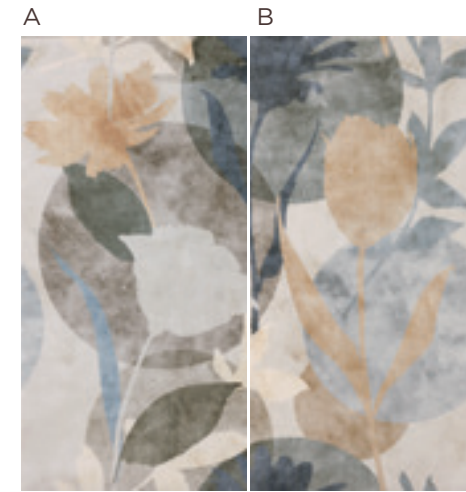
120x120 48"x48" rett  
A+B Comp. 2 pz 60x120 24"x48" rett

## WALL 15 MONKEY



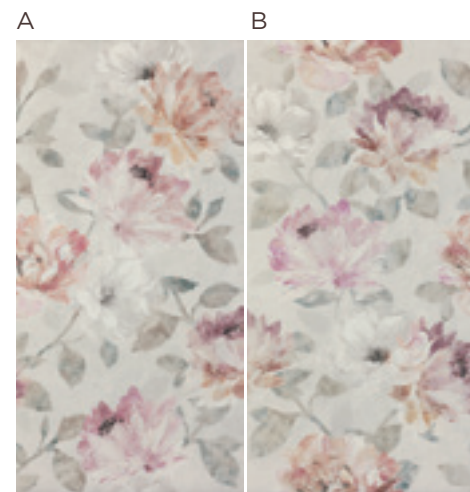
120x120 48"x48" rett  
A+B Comp. 2 pz 60x120 24"x48" rett

## WALL 30 POPPY



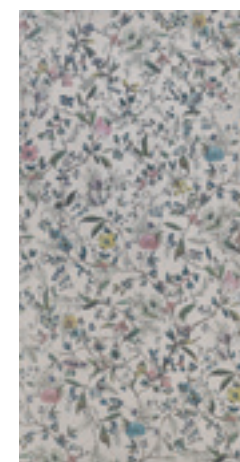
120x120 48"x48" rett  
A+B Comp. 2 pz 60x120 24"x48" rett

## WALL 32 AFRODITE



120x120 48"x48" rett  
A+B Comp. 2 pz 60x120 24"x48" rett

## WALL 10 SPRING



60x120 24"x48" rett

## WALL 33 FLORA AVORIO



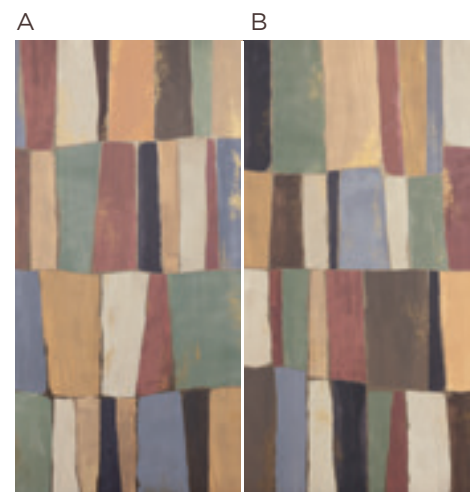
60x120 24"x48" rett

## WALL 34 FLORA AQUA



60x120 24"x48" rett

## WALL 25 DESERTO



120x120 48"x48" rett  
A+B Comp. 2 pz 60x120 24"x48" rett

## WALL 01 ART DECO



60x120 24"x48" rett

Geometrics

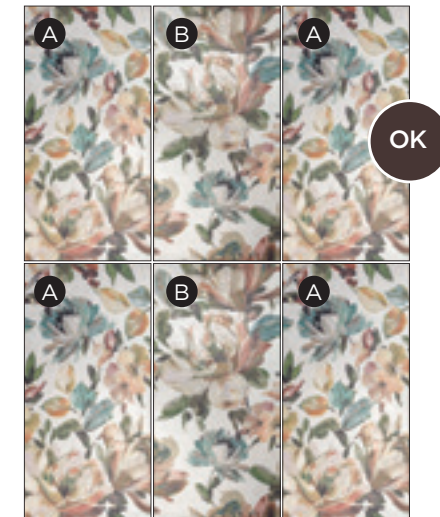
### INFORMAZIONI COMPOSIZIONI A DUE PEZZI

INFORMATION REGARDING TWO-PIECE COMPOSITIONS

INFORMATIONS SUR LES COMPOSITIONS EN DEUX PIÈCES

ANGABEN ZWEISTÜCKKOMBINATIONEN

ИНФОРМАЦИЯ О КОМПОЗИЦИЯХ ИЗ ДВУХ ЭЛЕМЕНТОВ



Controllare il numero di composizioni necessarie per completare correttamente il disegno: gli elementi si devono raccordare sia in orizzontale che verticale. Nel caso illustrato, sono necessarie 4 composizioni, non 3.

Check the number of compositions needed in order to complete the design correctly: the elements must be match up both horizontally and vertically. In the case shown, 4 compositions are needed, not 3.

Vérifier le nombre de compositions nécessaires pour compléter correctement le dessin : les éléments doivent coïncider aussi bien horizontalement que verticalement. Dans le cas illustré, les compositions nécessaires sont au nombre de 4 et non de 3.

Die Anzahl der Zusammenstellungen prüfen, die zur korrekten Vervollständigung der Zeichnung nötig sind: Die Elemente müssen sich sowohl waagrecht als auch senkrecht miteinander verbinden. Im dargestellten Beispiel sind nicht 3, sondern 4 Zusammenstellungen nötig.

Проверьте количество композиций, необходимых для правильного завершения рисунка. Элементы должны сочетаться как по горизонтали, так и по вертикали. В приведенном примере необходимы 4 композиции, не 3.

Per i **pavimenti coordinati** e gli arredi **E.lements** visita il sito **grupporomanispa.com**

For **matching floor** and **E.lements** furniture visit **grupporomanispa.com**

Pour les **sols coordonnés** et la décoration **E.lements**, veuillez visitez notre site **grupporomanispa.com**

Was die **koordinierten Beläge** und Einrichtungsgegenstände von **E.lements** betrifft, besuchen Sie unsere Web-site **grupporomanispa.com**

Информацию о **сочетании полов** и предметов интерьера **E.lements** можно найти на сайте **grupporomanispa.com**



# chromagic

**SOLO RIVESTIMENTO**  
 For use on walls only  
 Faïences uniquement  
 Nur Wandverkleidung  
 Только облицовка

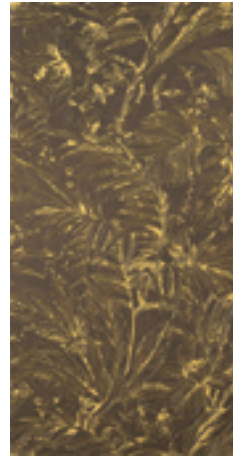
Chromagic

HERBARIUM EMERALD



60x120 24"x48" rett

HERBARIUM OCRE



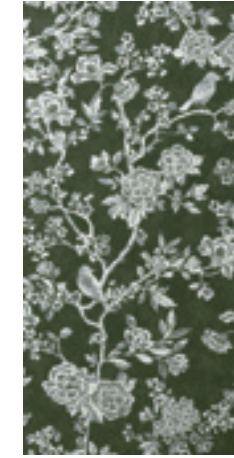
60x120 24"x48" rett

FLORAL BORDEAUX



60x120 24"x48" rett

FLORAL OLIVE



60x120 24"x48" rett

FLORAL BLUE



60x120 24"x48" rett

TIAN EMERALD



60x120 24"x48" rett

TIAN OCRE



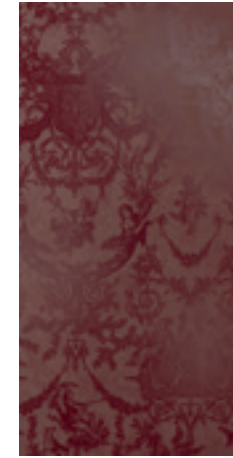
60x120 24"x48" rett

TIAN ROSE



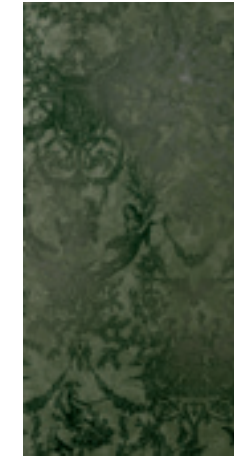
60x120 24"x48" rett

TOILE DE JOUY  
BORDEAUX



60x120 24"x48" rett

TOILE DE JOUY  
OLIVE



60x120 24"x48" rett

FASCIA  
TIAN EMERALD



30x60 12"x24" rett

FASCIA  
TIAN OCRE



30x60 12"x24" rett

FASCIA  
TIAN ROSE



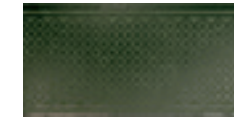
30x60 12"x24" rett

FASCIA TOILE DE  
JOUY BORDEAUX

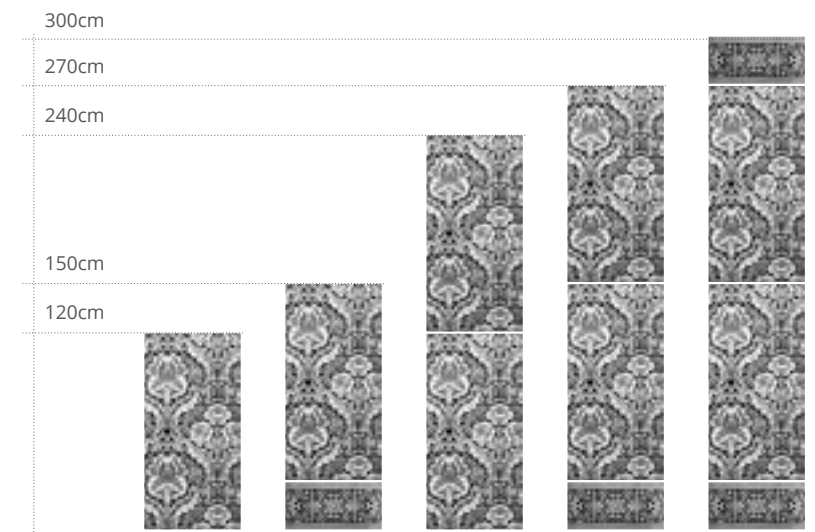


30x60 12"x24" rett

FASCIA TOILE DE  
JOUY OLIVE



30x60 12"x24" rett





# shoWall .Book



**GRES PORCELLANATO SMALTATO**  
GLAZED PORCELAIN STONEWARE / GRÉS CÉRAMÉ ÉMAILLÉ  
GLASIERTES FEINSTEINZEUG / ГЛАЗУРОВАННЫЙ КЕРАМОГРАНИТ

## IMBALLI

PACKING / EMBALLAGE / VERPACKUNG / УПАКОВКА

SIZES	PZ	MQ	KG	BOX	MQ	KG
120x120 48"x48" rett comp. 2 pz	comp. 1	1,44	31,00	-	-	-
60x120 24"x48" rett	2	1,44	31,00	-	-	-
60x240 24"x96" rett comp. 2 pz	comp. 1	1,44	31,00	-	-	-

## NOTE TECNICHE

TECHNICAL NOTES / NOTES TECHNIQUES / TECHNISCHE ANMRKUNGEN / ТЕХНИЧЕСКИЕ ЗАМЕЧАНИЯ

Tutti i formati sono nominali. Gruppo Romani si riserva la facoltà di modificare in qualunque momento le informazioni e le caratteristiche illustrate nel presente catalogo, che non sono comunque da ritenere legalmente vincolanti. I colori e le caratteristiche estetiche dei prodotti sono quanto più possibile vicini a quelli reali, nei limiti consentiti dai processi di stampa.

All sizes are nominal. Gruppo Romani reserves the right to modify the information and the characteristics illustrated in this catalogue (which are in any case not legally binding) at any moment. The colours and appearance features of the products are as close as possible to reality, within the limitation of the printing process.

Tous les formats sont nominaux. Gruppo Romani se réserve la faculté de modifier à tout moments les informations et les caractéristiques figurant dans le présent catalogue, lesquelles n'engagent pas par le fabricant au plan légal. Les couleurs et les caractéristiques esthétiques sont fidèles aux couleurs et caractéristiques réelles dans les limites des procédés d'impression.

Alle Formate sind Nennwerte. Die Firma Gruppo Romani behält sich vor, die in diesem Katalog enthaltenen Informationen und Eigenschaften jederzeit zu ändern; sie gelten auf keinen Fall als gesetzlich bindend. Die Farben und ästhetischen Eigenschaften der Produkte kommen innerhalb der Möglichkeiten der Druckverfahren den tatsächlichen Eigenschaften so weit wie möglich nahe.

Все форматы являются номинальными. Gruppo Romani оставляет за собой пзменять в любой момент данные и характеристики, приведенные в настоящем каталоге, которые в любом случае не считаются юридически обязательными. Цветовая окраска и эстетические характеристики изделий приближаются как можно больше к реальным, в пределах допускаемых процессами печати.

## CONSIGLI PER LA POSA E LA PULIZIA

TIPS FOR LAYING AND CLEANING / CONSEILS POUR LA POSE ET LE NETTOYAGE

VERLEGE- UND REINIGUNGSTIPPS / РЕКОМЕНДАЦИИ ПО УКЛАДКЕ И ЧИСТКЕ ПО УКЛАДКЕ

La posa del prodotto rettificato a giunto accostato, non unito, richiede una maggiore attenzione e precisione da parte dell'installatore sia per quanto riguarda la planarità del piano di posa sia per la continuità delle fughe. Per un effetto ottimale della posa, Gruppo Romani suggerisce di mantenere almeno 2 mm di fuga.

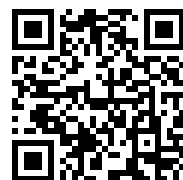
The laying of ground products with joints that are close but not joined requires greater care and accuracy by the installer both as regards the planarity of the laying surface and the continuity of the joints. For an optimal effect of the laying, Gruppo Romani suggests to maintain at least a joint of 2 mm. Fill with caution the joints with mortar and apply it with caution and care, since these precious and noble metals do not chemically bond with the glaze, but adhere only to the surface. Abrasive products, concentrated acids or alkalis must be absolutely avoided for cleaning; the decoration would not resist to them. The use of alcohol or water with the addition of a usual light detergent for sensitive dishware does not alter the shine of the decoration or the beauty of the tile. Reflecting glazes (lustres) are characterised by the variability of the hue.

L'installation du produit rectifié avec joints proches mais qui ne se rejoignent pas nécessite d'une plus grande attention et précision de la part de l'installateur tant en ce qui concerne la planéité de la surface de pose que la continuité des joints. Pour un effet optimal de la pose, Gruppo Romani suggère de maintenir au moins 2 mm de joint. Remplissez avec prudence les joints avec du mortier et appliquez-le avec attention et avec soin, car ces métaux précieux et nobles ne se lient pas chimiquement à l'émail, mais n'adhèrent qu'à la surface. Pour le nettoyage, les produits abrasifs, les acides concentrés ou les alcalis doivent être absolument évités; la décoration n'y résisterait pas. L'utilisation d'alcool ou d'eau avec l'ajout d'un détergent léger habituel pour la vaisselle délicate ne modifie pas la splendeur de la décoration ou la beauté du carrelage. La caractéristique des émaux réfléchissants (lustres) est la variabilité de la tonalité de la couleur.

Procedere con cautela a stuccare con malta i giunti ("fughe"), applicando con prudenza e con cura, poiché questi metalli preziosi e nobili non si uniscono chimicamente allo smalto, ma aderiscono solamente alla superficie. Per la pulizia sono da evitare assolutamente prodotti abrasivi gli acidi o gli alcali concentrati: la decorazione non resisterebbe. L'impiego di alcool o acqua addizionata di un detergente molto leggero abituale per i tipi di stoviglie delicate non altera né lo splendore del decoro, né la bellezza della piastrella. Caratteristica degli smalti a riflesso (lustri) è la variabilità del punto di colore.

Das Verlegen des rektifizierten Produkts mit einer nicht fugenfreien Stoßverbindung erfordert eine größere Aufmerksamkeit und Präzision, sowohl was die Ebenheit der Verlegefläche als auch die Kontinuität der Fugen anbelangt. Um einen optimalen Verlegeeffekt zu erzielen, empfiehlt Gruppo Romani Fugen von mindestens 2 mm. Die Verbindungen („Fugen“) behutsam und sorgfältig mit Mörtel füllen, da sich diese noblen Edelmetalle nicht chemisch mit der Glasur verbinden, sondern nur an der Oberfläche haften. Bei der Reinigung unbedingt Schleifmittel wie Säure- oder Alkalikonzentrate vermeiden: Das Dekor würde darunter leiden. Die Verwendung von Alkohol oder Wasser unter Zusatz eines sehr leichten Reinigungsmittels für empfindliches Geschirr beeinträchtigt weder den Glanz des Dekors noch die Schönheit der Fliesen. Eine Eigenschaft der reflektierenden Glasuren (Lüster) ist die Variabilität des Farbpunkts.

Укладка со швом, а не встык, обрезного продукта требует от плиточника больше внимания и точности при выполнении работ, как для обеспечения ровности поверхности укладки, так и непрерывности швов. Для получения наилучшего результата укладки Gruppo Romani рекомендует выполнять шов шириной не менее 2 мм. При заполнении (межплиточных) швов затиркой необходимо действовать аккуратно, тщательно и точно наносить его, потому что драгоценные металлы не вступают в химическую реакцию с глазурью, а лишь только лежат на ее поверхности. Для очистки следует категорически избегать использования абразивных средств, концентрированных кислот или щелочей, так как они испортят декор. Наоборот, использование спирта или водного раствора легкого моющего средства для деликатной посуды не влияет ни на блеск декора, ни на красоту плитки. Отражающие (блестящие) глазури характеризуются изменчивостью цветового оттенка.



© Copyright 2023 Gruppo Romani S.p.A. Industrie Ceramiche

Gruppo Romani S.p.A. Industrie Ceramiche  
www.gruppromanispa.com

“Ceramics of Italy”



<b>CE</b>
GRUPPO ROMANI S.P.A. INDUSTRIE CERAMICHE VIA A. VOLTA 9, 23126 42013 CASALGRANDE (PR)
05 001CPR2013-07-01
<b>EN 14411:2012</b>
Piastrelle di ceramica pressate a secco, con assorbimento di acqua E <sub>s</sub> ≤ 0,5% per pavimentazioni interne ed esterne. Dry pressed ceramic tile with water absorption E <sub>s</sub> ≤ 0,5% for internal and external floorings.





Via A. Volta 23/25  
42013 Casalgrande (Re) Italy  
Tel. +39-0522-998911/411

