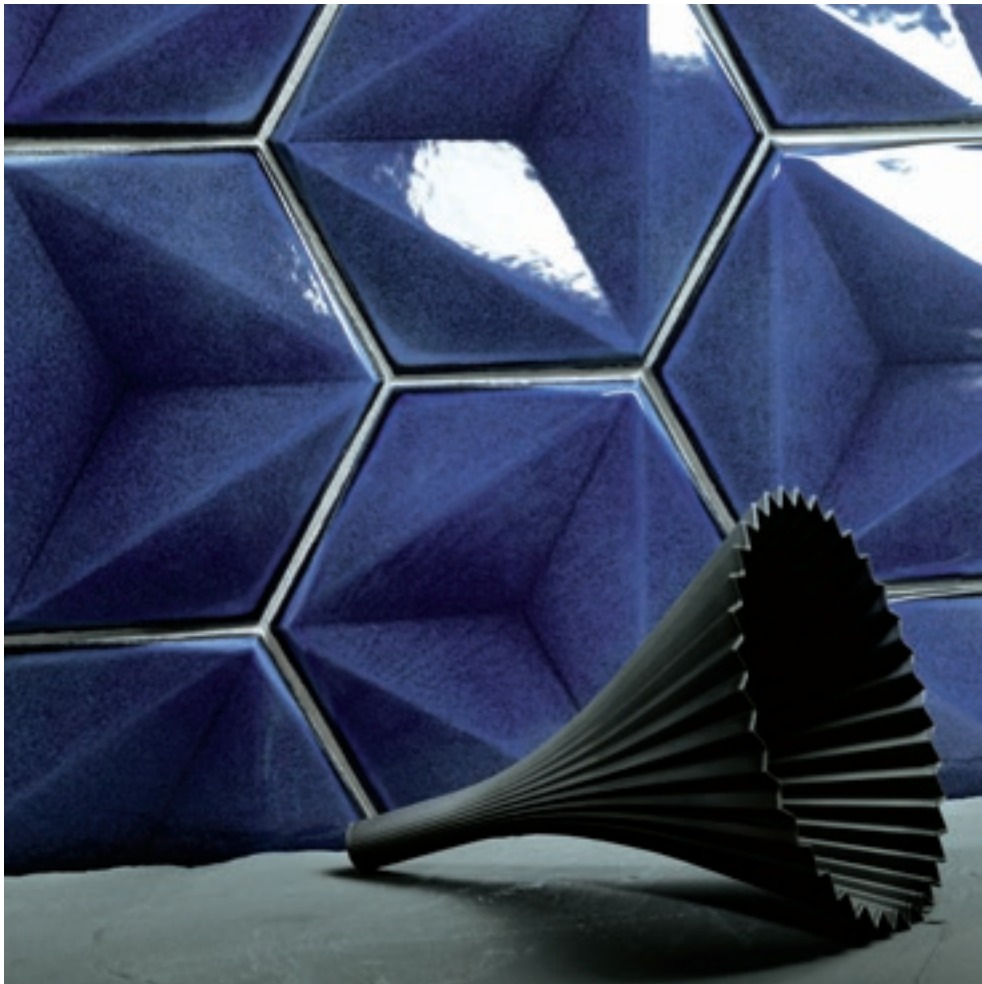


Collezione

K A R M A

GRES SMALTATO



7 COLORI



2 STILI



ESAGONA
15,1x17,3 - 6"x7"



BRICK
7,6x30,5 - 3"x12"

L'energia, il brio e l'effervescenza di sette vividi colori ad effetto "perlage" per questo concept dinamico in formato 7,6x30,5 ed Esagona 15,1x17,3. La profondità di cristalline pregiate in gres smaltato decorativo per un rivestimento giovane e vivace.

The energy, excitement and vivacity of 7 bright colors with a "sparkling" effect are the main feature of this dynamic concept in size 7,6x30,5 and Hexagone shape 15,1x17,3.

The pureness of exquisite glazes on a decorative porcelain biscuit for a young and vibrant wall tile.

L'énergie, la vivacité et le pétiller de ces sept vif couleurs avec un effet "perlage" pour ce concept dynamique dans le format 7,6x30,5 et hexagone 15,1x17,3.

La profondeur des émaux précieux en grés porcelaine décoratif pour un revêtement vif et jeune.

Energie, Pep und Spritzigkeit von 7 lebendigen Toenen mit « Perlglanz – effekt » in diesem dynamischen Konzept im Format 7,6x30,5 cm und im Sechseck 15,1x17,3.

Die Tiefe der hochwertigen Glasuren eines dekorativen Steinzeugs bringen einen frischen und lebendigen Wandbelag hervor.

Энергия, восторг и игра семи ярких цветов в сочетании с эффектом искрящейся глазури заключены в этой динамичной концепции в форме прямоугольника 7,6x30,5 и в форме шестиугольника 15,1x17,3. Чистота драгоценного кристалла для современной и живой отделки.

STILE ESAGONA P.04



Karma Esagona Grafite 15,1x17,3

STILE BRICK P.10

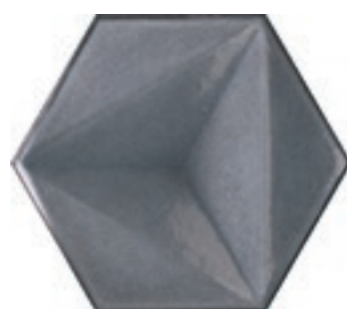


Karma Brick Grigio 7,6x30,5

STILE ESAGONA 15,1x17,3



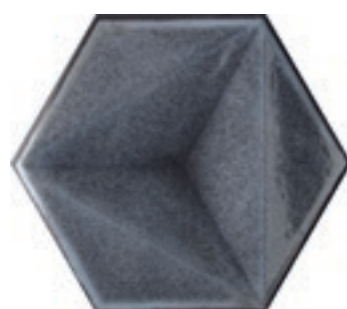
BIANCO



GRIGIO



PERLA



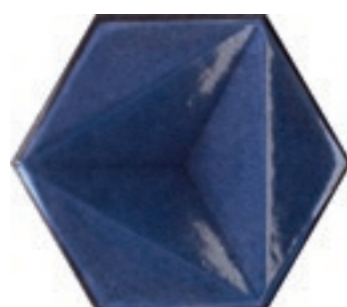
FUMO



ECRU



GRAFITE



BLU





Karma Esagona Ecreu 15,1x17,3



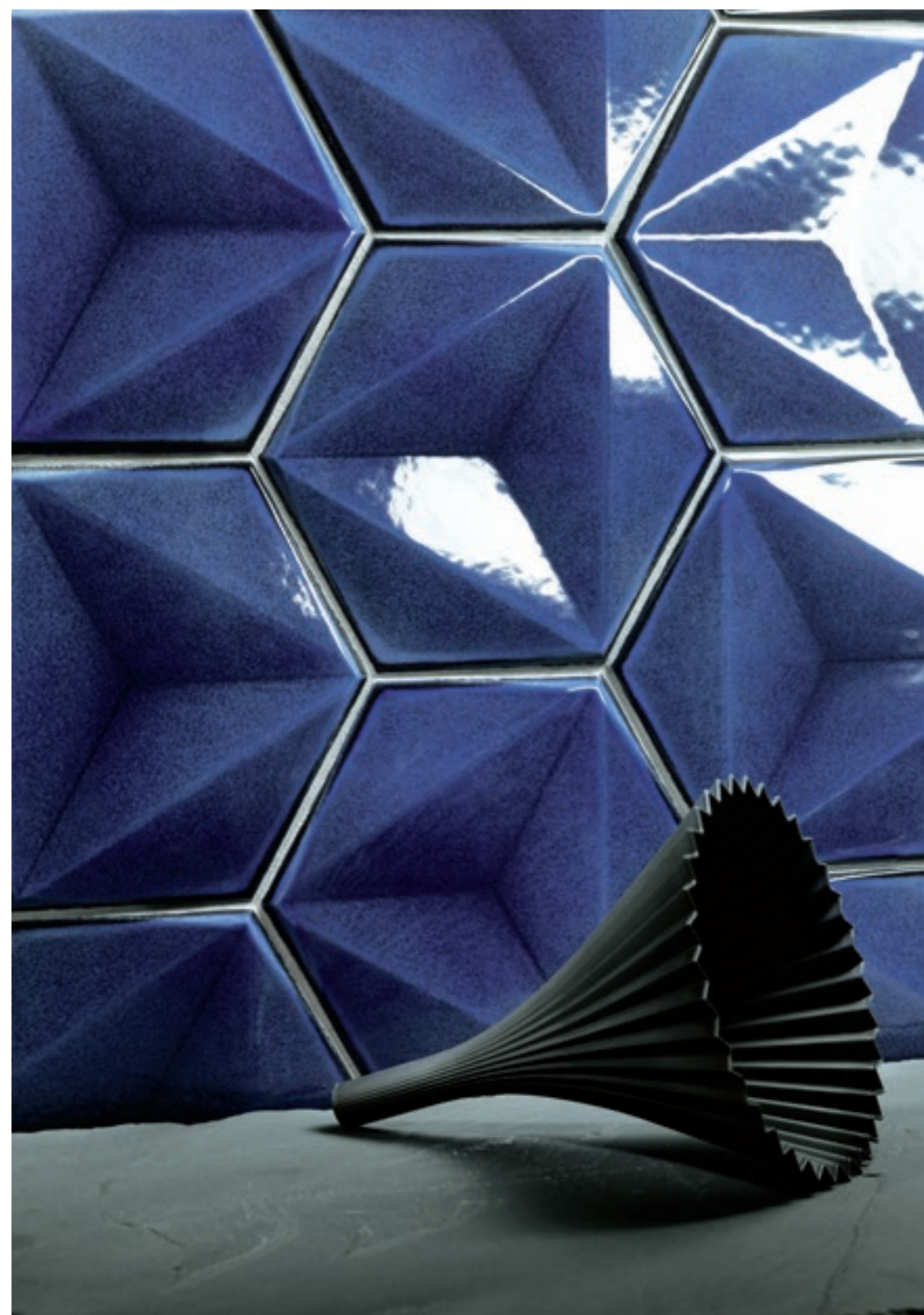
Karma Esagona Perla 15,1x17,3



Karma Esagona Blu 15,1x17,3 - Karma Esagona Bianco 15,1x17,3

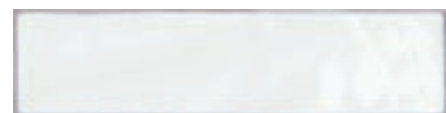


Karma Esagona Grigio 15,1x17,3



Karma Esagona Blu 15,1x17,3

STILE BRICK 7,6x30,5



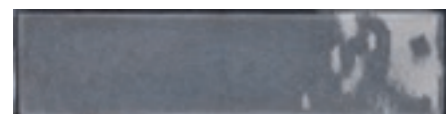
BIANCO



PERLA



ECRU



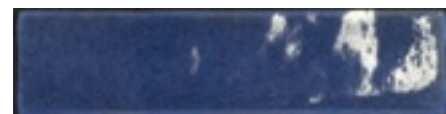
GRIGIO



FUMO



GRAFITE



BLU





Karma Brick Bianco 7,6x30,5



Karma Brick Grafite 7,6x30,5



Karma Brick Fumo 7,6x30,5



Karma Brick Ecrú 7,6x30,5 - Quarter Round Ecrú 1,2x30,5



Karma Brick Perla 7,6x30,5

ESAGONA 15,1x17,3 - 6"x7"



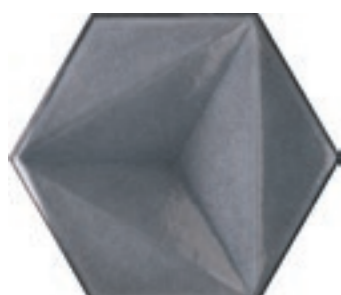
73 154110 Esagona Bianco



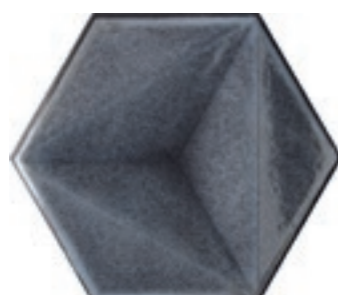
73 154111 Esagona Perla



73 154112 Esagona Ecrú



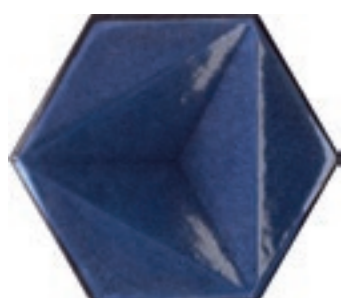
73 154113 Esagona Grigio



73 154114 Esagona Fumo



73 154115 Esagona Grafite



73 154116 Esagona Blu

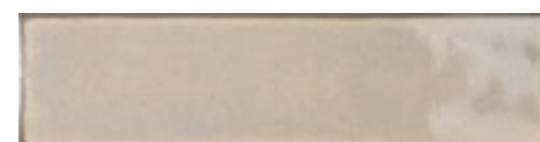
BRICK 7,6x30,5 - 3"x12"



95 154100 Brick Bianco



95 154101 Brick Perla



95 154102 Brick Ecrú



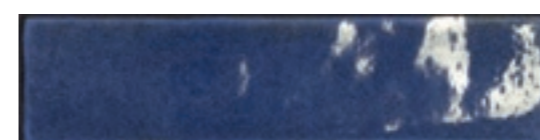
95 154103 Brick Grigio



95 154104 Brick Fumo



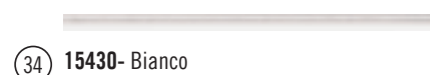
95 154105 Brick Grafite



95 154106 Brick Blu

PEZZI SPECIALI - TRIMS - PIÈCES SPÉCIALES - FORMSTÜCKE - СПЕЦИАЛЬНЫЕ ИЗДЕЛИЯ

Quarter Round 1,2x30,5



34 15430- Bianco



34 15431- Perla



34 15432- Ecrú



34 15433- Grigio







34 15434- Fumo



34 15435- Grafite



34 15436- Blu

Caratteristiche tecniche Technical features . Caracteristiques techniques . Technische Eigenschaften . Технические характеристики UNI EN ISO 14411 BIIa A. J GL		Metodo di prova Testing method Teste d'essai Pruefmethode Методика испытаний	Valore Value Valeur Wert Величина
	Assorbimento acqua Water absorption Absorption d'eau Wasseraufnahme Водопоглощение	ISO 10545.3	> 3 % ≤ 6 %
	Resistenza alla flessione Bending strength Résistance à la flexion Biegezugfestigkeit Стойкость к изгибу	ISO 10545.4	Conforme
	Resistenza all'attacco chimico Chemical resistance Résistance à l'attaque chimique Beständigkeit gegen Chemikalien Стойкость к химическому воздействию	ISO 10545.13	A
	Resistenza alle macchie Stain resistance Résistance aux taches Fleckenbeständigkeit Стойкость к образованию пятен	ISO 10545.14	5

Si raccomanda una posa a correre. - Recommended installation is staggered joint. - Eine lose Verlegung im Versatz wird empfohlen. - On préconise une pose décalé 1/3 - 2/3, ou Joints continus. - рекомендуется укладка в разбежку.

La manifattura di questo prodotto è stata realizzata con procedimenti artigianali e non industriali. Piccole imperfezioni, avvallamenti ed increspature della superficie sono volutamente presenti costituendone specifica caratteristica del prodotto e ne testimoniano la speciale manifattura artigianale.

Manufacturing of this product has been realized with hand crafted procedures and not industrial. Small imperfections, subsidence and ripples of the surface are deliberately present and they are a feature of the product, proving the hand-made manufacturing procedure.

Ce ci est le résultat de un produit artisanal. Il est à noter que: Les petites imperfections, ébréchures, point émaillée, présent dans quelques carreaux, sont en fait témoignage d'une production pas-industrielle.

Die Herstellung dieses Produktes erfolgt ueber handwerkliche Verfahrensweisen und keine industriellen. Kleine Unregelmässigkeiten und Unebenheiten der Oberflaechen sind bewusst vorhandene Charakteristiken des Produktes und bezeugen eben seine speziell handwerkliche Herkunft.

Производство и упаковка этого продукта были выполнены ремесленным способом. Маленькие неточности, впадины и складки поверхности намеренно присутствуют, являясь особой характеристикой продукта, и свидетельствуют об его особом ремесленном способе производства.

Tabella imballi Packaging . Emballages Verpackungen . Упаковка	Mq x Scat.	Pz x Scat.	Kg x Scat.	Mq x Pall.	Scat. x Pall	Kg x Pall.
Brick 7,6x30,5	0,464	20	10,0	33,408	72	720,0
Esagona 15,1x17,3	0,493	25	11,8	22,185	45	531,0
Quarter Round 1,2x30,5	-	20	1,1	-	-	-

SETTECENTO
mosaici e ceramiche d'arte


Ceramics of Italy

Ceramiche Settecento Valtresinaro S.p.A.
Via del Crociale, 21 - 41042 Fiorano Modenese (MO)
Tel. +39 0536 928711 - Fax +39 0536 928718
www.settecento.com - e-mail: info@settecento.com