



*essence*  
COLLECTION





*essence*  
COLLECTION

# essence

COLLECTION



## **produzione - production**

industriale - industrial

## **spessore - thickness**

10 mm

## **usi - use**

interni residenziali, bagni o locali commerciali e spazi pubblici -  
housing environments, bathrooms or refined commercial locations  
as well as public spaces.

## **formati - sizes**

30.2 × 120.8 20.13 × 120.8



## **decori - decoration**

mosaic

## **complementary pieces**

gradino - gradone angolare - elemento a L - battiscopa

ESSENCE



coffee

juniper



mint

vanilla



anise



licorice



*juniper*

*coffee mosaic*

*mint*

*groove classic*

*20.13 ° 120.8*

*30.2 ° 120.8*



# the perfect match

→ anise

2  
vanilla

*Affascinare con la delicatezza delle sfumature, definire lo spazio attraverso il colore. Unicomstarker propone una collezione di legni in una palette di toni naturali perfettamente abbinabili alle sue collezioni di maggior successo, in diversi formati e superfici, per creare ogni volta inedite soluzioni di interior design.*



→ statuario hexagon

*Charm with delicate nuances, tracing space through shades. Unicomstarker presents a colour palette where every natural color shade can be combined with different sizes and surfaces of his collections to create fresh solution of interior design.*



8.9

*essence*

**essence licorice**  
30.2 x 120.8 + 20.13 x 120.8  
12" x 48" + 8" x 48"

**groove classic**  
7.5 x 30.4 3" x 12"







*Essence collection esalta il carattere naturale e seducente di ogni tipo di ambiente, sia pubblico che privato.*



*Essence collection enhances the natural and seductive mood of every kind of location, both public and private.*

*get the look*



**essence**  
licorice



**groove**  
classic

10·11

*essence*

essence licorice  
30.2 × 120.8 + 20.13 × 120.8  
12" × 48" + 8" × 48"

*licorice*



essence  
licorice





12·13

*essence*

licorice grip  
20.13 x 120.8 8" x 48"





*grip surface*



*20.13 x 120.8*

*La superficie grip nel formato 20.13x120.8 rende  
Essence collection, un prodotto ideale per creare un  
total look tra ambiente interno  
e spazi esterni.*



*The grip surfaces in the 20.13x120.8 makes Essence  
collection a perfect product to create  
a total look between inner and outer spaces.*

14-15  
*essence*

*licorice*



**MOSAICO**

30.2 X 30.2  
12" x 12"



**RETTIFICATO | GRIP**

20.13 X 120.8  
8" x 48"



**RETTIFICATO**

30.2 X 120.8  
12" x 48"



**essence**  
licorice grip

16·17

*essence*

**essence juniper**  
30,2 × 120,8 + 20,13 × 120,8  
12" × 48" + 8" × 48"

**essence juniper**  
30,2 × 120,8 + 20,13 × 120,8  
12" × 48" + 8" × 48"

**muse statuario hexagon**  
30 × 34 12" × 13"

*get the look*



**essence**  
juniper



**muse**  
statuario hexagon





18 · 19

*essence*

**essence juniper**  
302 × 120,8 + 20,13 × 120,8  
12" × 48" + 8" × 48"

**muse statuario hexagon**  
30 × 34 12" × 13"

●  
**essence juniper**  
302 × 120,8 + 20,13 × 120,8  
12" × 48" + 8" × 48"

**muse statuario hexagon**  
30 × 34 12" × 13"



*juniper*



**essence**  
juniper



**muse**  
statuario hexagon

20·21

*essence*

essence juniper  
30.2 × 120.8 + 20.13 × 120.8  
12" × 48" + 8" × 48"

*juniper*



**MOSAICO**

30.2 × 30.2  
12" × 12"



**RETTIFICATO | GRIP**

20.13 × 120.8  
8" × 48"



**RETTIFICATO**

30.2 × 120.8  
12" × 48"





*Suggerioni naturali che animano lo spazio  
con eleganza e personalità.*



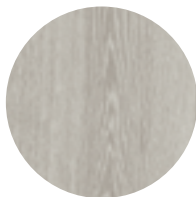
*Natural allure which animate the space  
with elegance and personality.*

**22 · 23**

*essence*

essence anise  
30.2 × 120.8 + 20.13 × 120.8  
12" × 48" + 8" × 48"

*get the look*



**essence**  
anise





**24 · 25**

*essence*

**essence anise**  
302 × 120.8 + 20.13 × 120.8  
12" × 48" + 8" × 48"



**essence anise**  
302 × 120.8 + 20.13 × 120.8  
12" × 48" + 8" × 48"







*anise*



**essence**  
anise

**26 · 27**

*essence*

essence anise  
30.2 × 120.8 + 20.13 × 120.8  
12" × 48" + 8" × 48"



*anise*



**MOSAICO**  
 $\frac{30.2 \times 30.2}{12'' \times 12''}$



**RETTIFICATO | GRIP**  
 $\frac{20.13 \times 120.8}{8'' \times 48''}$



**RETTIFICATO**  
 $\frac{30.2 \times 120.8}{12'' \times 48''}$



28 · 29

*essence*

essence vanilla  
20.13 × 120.8 8" × 48"

groove tango  
7.5 × 30.4 3" × 12"





*Ritrovare l'eleganza di un design senza tempo  
all'interno di un ambiente reinterpretato  
in chiave contemporanea.*



*Rediscover the elegance of a timeless design  
in an environment reinterpreted in a  
contemporary key.*

*get the look*



**essence**  
vanilla



**groove**  
tango

**30·31**

*essence*

essence vanilla  
20.13 x 120.8 8" x 48"



essence vanilla  
20.13 x 120.8 8" x 48"

*vanilla*



essence  
vanilla





32·33

*essence*

essence vanilla  
20.13 x 120.8 8" x 48"







**MOSAICO**  
30.2 X 30.2  
12" x 12"



**RETTIFICATO**  
30.2 X 120.8  
12" x 48"



**RETTIFICATO | GRIP**  
20.13 X 120.8  
8" x 48"

*vanilla*



34 · 35

*essence*

essence mint  
20.13 x 120.8 8" x 48"



essence mint  
20.13 x 120.8 8" x 48"



*get the look*



**essence**  
mint





**36·37**  
*essence*

**essence mint**  
20.13 × 120.8 8" × 48"

*mint*



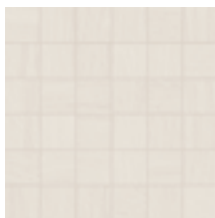
**essence**  
**mint**

**38·39**

*essence*

essence mint  
20.13 x 120.8 8" x 48"

...  
R LOVERS



**MOSAICO**  
30.2 X 30.2  
12" x 12"



**RETTIFICATO**  
30.2 X 120.8  
12" x 48"



**RETTIFICATO | GRIP**  
20.13 X 120.8  
8" x 48"

*mint*



40 · 41

*essence*

essence coffee  
20.13 × 120.8 8" × 48"

icon esagono blend  
21 × 18.2 8.1764" × 7.23"







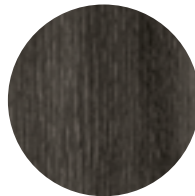
*Superfici che reagiscono alla luce con  
vibranti effetti di chiaroscuro.*



*Surface that react to the light creating  
vibrant chiaroscuro effects.*



*get the look*



**essence**  
coffee



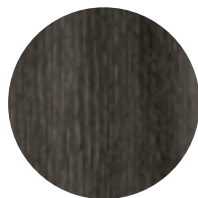
**icon**  
esagono blend

**42·43**

*essence*

essence coffee  
20.13 x 120.8 8" x 48"

*coffee*



**essence**  
coffee



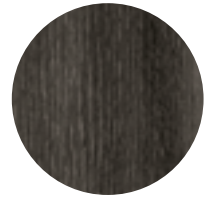


44 · 45

*essence*

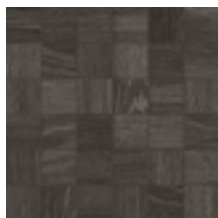
essence coffee  
20.13 × 120.8 8" × 48"

*coffee*



**essence**  
coffee





**MOSAICO**  
 $\frac{30.2 \times 30.2}{12'' \times 12''}$



**RETTIFICATO | GRIP**  
 $\frac{20.13 \times 120.8}{8'' \times 48''}$



**RETTIFICATO**  
 $\frac{30.2 \times 120.8}{12'' \times 48''}$



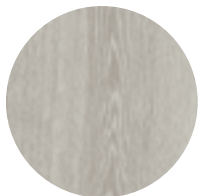
**46 · 47**

*essence*

**essence anise**  
20.13 × 120.8 8" × 48"

**essence anise mosaic**  
30.2 × 30.2 12" × 12"

*get the look*



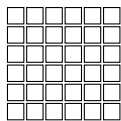
**essence**  
anise



**essence**  
anise mosaic



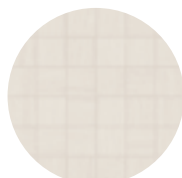
*essence*  
M O S A I C S



MOSAIC  
 $\frac{30.2 \times 30.2}{12'' \times 12''}$

# TECHNICAL INFORMATION & PLUS

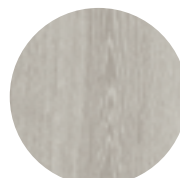
## COLORI - COLOURS



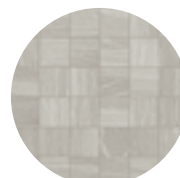
mint mosaic



mint



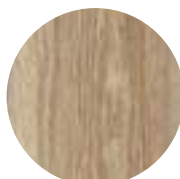
anise



anise mosaic



vanilla mosaic



vanilla



juniper



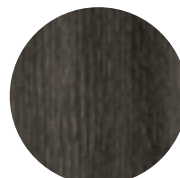
juniper mosaic



licorice mosaic



licorice



coffee



coffee mosaic

## FORMATI - SIZES



### RETTIFICATO

$30.2 \times 120.8$   
 $12'' \times 48''$

66



### RETTIFICATO | GRIP

$20.13 \times 120.8$   
 $8'' \times 48''$

66

69



36 tessere  
tessera 5 x 5

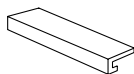
### MOSAICO

$30.2 \times 30.2$   
 $12'' \times 12''$

115



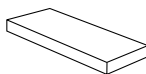
## PEZZI SPECIALI - SPECIAL ITEMS



### GRADONE COSTA RETTA RETTIFICATO

$\frac{30.2 \times 120.8 \times 4}{12'' \times 48'' \times 1\frac{2}{3}''}$

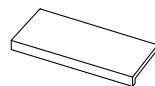
165



### GRADONE ANGOLARE COSTA RETTA RETTIFICATO

$\frac{30.2 \times 120.8 \times 4}{12'' \times 48'' \times 1\frac{2}{3}''}$

175



### ELEMENTO A L RETTIFICATO | GRIP

$\frac{20.13 \times 120.8 \times 5}{8'' \times 48'' \times 2''}$

98 100



### BATTISCOPA SMALTATO RETTIFICATO

$\frac{7 \times 60.4}{2\frac{3}{4}'' \times 24''}$

18

### GRIP RETTIFICATO

$\frac{20.13 \times 120.8 \times 4}{8'' \times 48'' \times 1\frac{2}{3}''}$

165

### GRIP RETTIFICATO

$\frac{20.13 \times 120.8 \times 4}{8'' \times 48'' \times 1\frac{2}{3}''}$

175

$\frac{20.13 \times 60.4 \times 5}{8'' \times 24'' \times 2''}$

50 51

## IMBALLI - PACKING












mm	inch		spessore thickness	pezzi/sc pcs/box	mq/sc sqm/box	kg/sc kgs/box	sc/pl box/pal	mq/pl sqm/pal	kq/pl kgs/pal
30.2x120.8	12x48	rettificato	10	4	1.46	31.12	26	37.96	809.12
20.13x120.8	8x48	rettificato   grip	10	5	1.22	25.85	30	36.48	775.50
30.2x30.2	12x12	mosaico		11	1.00	21.65	36	36.11	779.40
30.2x120.8x4	12x48x12/3	gradone costa retta rettificato		2		19.50			
30.2x120.8x4	12x48x12/3	gradone angolare costa retta rettificato		1		10.25			
20.13x120.8x4	8x48x12/3	gradone costa retta grip rettificato		2		14.48			
20.13x120.8x4	8x48x12/3	gradone angolare costa retta grip rettificato		1		7.58			
20.13x60.4x5	8x24x2	elemento a L rettificato   grip		4		13.12			
20.13x120.8x5	8x48x2	elemento a L rettificato   grip		2		13.10			
7x60.4	23/4x24	battiscopa smaltato rettificato		12		11.76			

il peso riportato è comprensivo del pallet di supporto - the indicated weight includes the supporting pallet - le poids indiqué est compris de la palette de support - das angegebene gewicht versteht sich einschließlich der palette

## FUGHE - JOINT - JOINT - FUGE

per materiale rettificato prevedere una fuga di almeno 2 mm sul monoformato e necessariamente 3 mm sul multiformato  
 por rectified material, we recommend a 2 mm grout at least when using one size only and a 3 mm grout for multisizes laying solution  
 pour le matériel rectifié prévoir un minimum de 2mm de joint et 3mm pour la pose multiformat  
 fuer rettifiziertes material-monoverlegung wollen sie bitte eine fugen von 2 mm vorsehen – fuer modulerlegung eine fugen von 3 mm

## CARATTERISTICHE TECNICHE - TECHNICAL FEATURES

	standards	characteristics or properties	declared values
	ISO 10545-3	assorbimento d'acqua water absorption	≤0.5%
	ISO 10545-4	resistenza alla flessione (R) breaking strength	35 N/mm <sup>2</sup>
	ISO 10545-13	resistenza agli acidi resistance to acid	GLA
	ISO 10545-7	resistenza all'abrasione (PEI) resistance against abrasion (PEI)	IV
	ISO 10545-12	resistenza al gelo frost resistance	resiste frost proof
	ISO 10545-14	resistenza alle macchie stain resistance	5
	ISO 10545-2	planarità surface flatness	±0.5%
		spessore thickness	10 mm
	DIN 51097 DIN 51130 DCOF BOT3000	coefficiente d'attrito (scivolosità) static coefficient of friction	A R9 >0.42
	GRIP DIN 51097 DIN 51130 DCOF BOT3000	coefficiente d'attrito (scivolosità) static coefficient of friction	A+B+C R12 >0.42
		variazioni cromatiche color shade	V2 variazione leggera V2 slight variation



Ceramics of Italy

unicom srl

via flumendosa 7 - 41042 fiorano modenese - modena - italy

T +39 (0)536 926011 - F italy +39 (0)536 926038 - F world +39 (0)536 926033 - F europe +39 (0)536 926023

printed and bound in Italy

© 2017 unicom srl - all rights reserved



